

6B

6B) Now add the trim to the six upper dormers starting with the two smaller side trim pieces on each. Apply these as you did the others with the front edge flush with the end of the wall. Next apply the larger trim pieces to the front of the dormers overlapping the side trim as shown.

Dormer subroof panels:

7) Glue the six sets of subroof panels on to the tabs on the front walls of each dormer. Glue the back edge to the main subroof panels.

Roof and dormer trim:

8A) Install the roof peak decorative trim boards by removing the backing from the inner board and pressing the trim to the ends of the subroof panels. Now apply the small trim sections on top of the inner boards as shown.

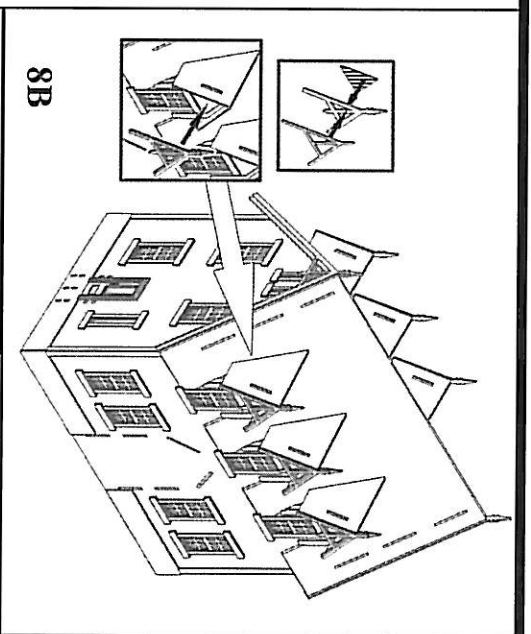
Be careful handling the model from now on as the small trim peaks are both fragile and sharp!

8B) Apply the six roof dormer trims in the same manner.

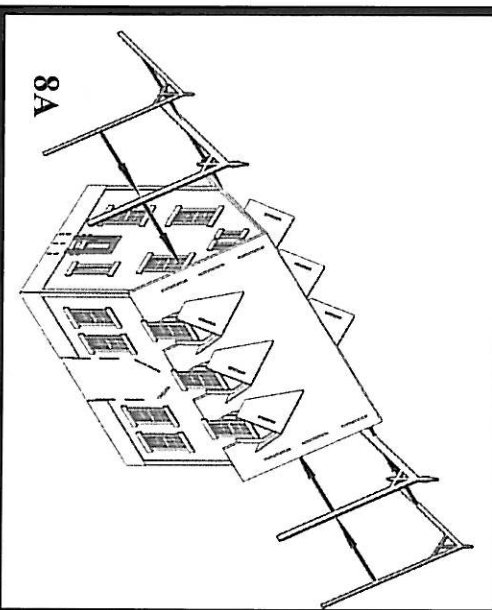
Lighthouse tower:

9A) Eight panels are used to make up the tower walls. Glue the four lower sections together as shown followed by the four upper sections. Make sure they are square and set aside to dry.

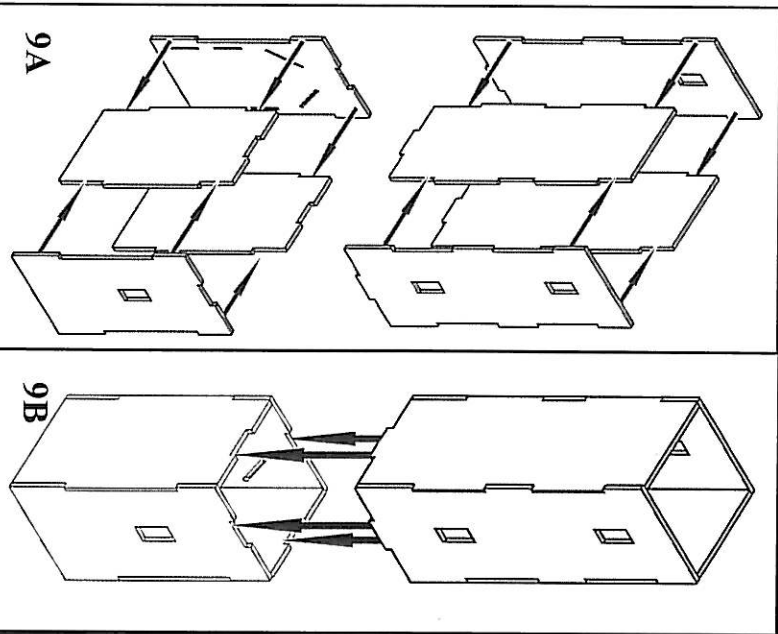
9B) Now glue the upper half of the tower to the lower half. Note that they are tabbed to line up together. Check the alignment to make sure that the window sections line up properly to one another.



8B



8A



9A

9B