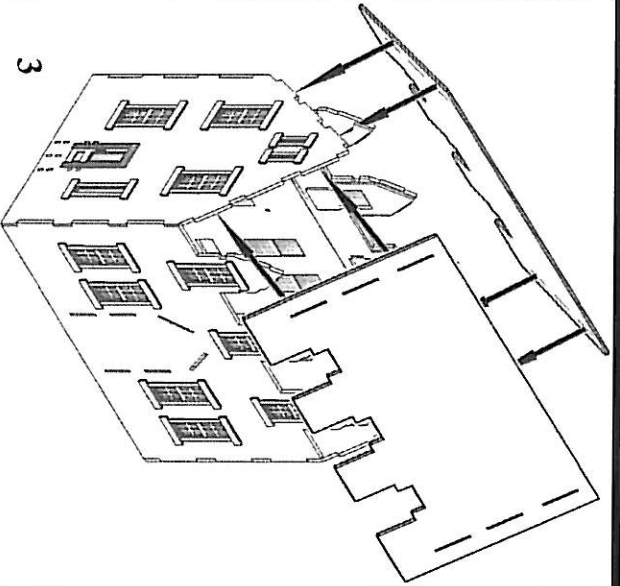


LASER-ART STRUCTURES by BRANCHLINE TRAINS



3

Subroof panels:

3) The subroof panels are cut to fit around the window dormers and mount on the tabs located on the tops of the end walls. Check fit, then glue the subroof panels into place.

Dormer sides:

4) With the subroof now in place glue the two small side walls onto each window dormer as shown.

Foundation:

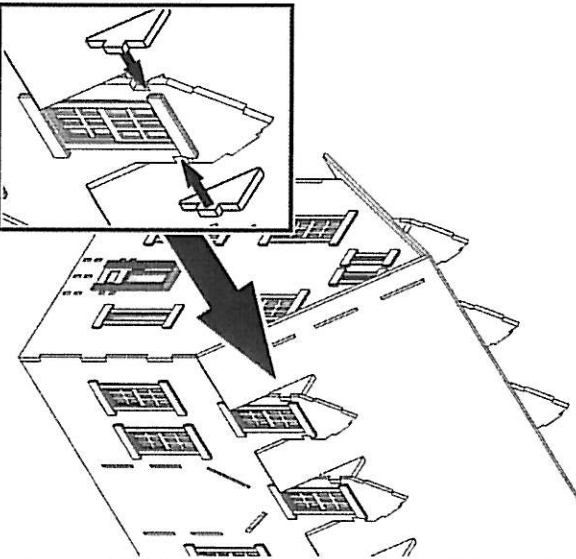
5) Now apply the stone foundation sheets to the base of the main walls. Remove the peel-and-stick backing from each section of the plastic stone sheet prior to applying it to the structure. Install the two foundation pieces on the end walls first. Next, add the front and rear sections. Note that these overlap the end wall sections to give you an even corner. You can use a file to clean up the corners if needed or apply a little liquid plastic cement to the edges to soften the sharp corners if desired.

Once in place, you can paint the stonework with a gray or brown paint (You may choose to wait until all of the stonework has been installed in step 14). Spend a few minutes and pick out some of the individual stones with lighter and darker shades of your base color. Once this is dry follow with a wash of light gray or black to represent the mortar between the stones (Light gray will make the foundation appear newer, black older). Finally dry brush some light gray or tan highlights onto the stones.

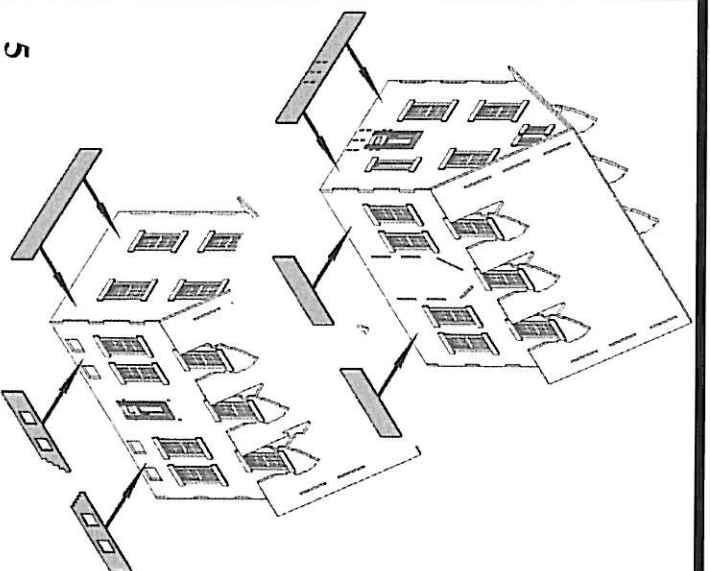
The remaining sections of stone will be installed in a later step.

Trim:

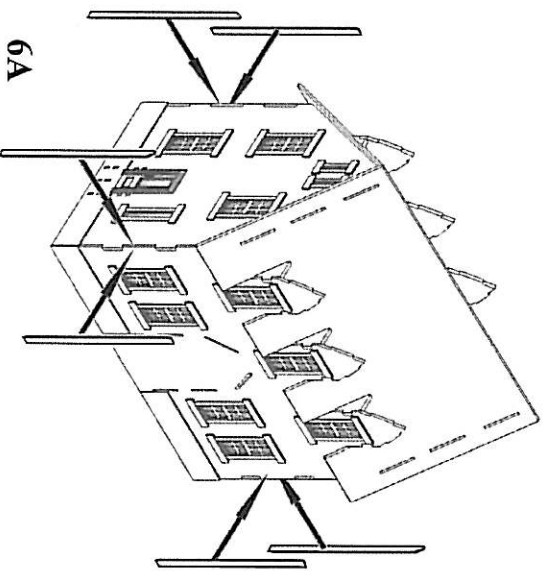
6A) The corner trim is made up from two boards, one slightly wider than the other. Start by removing the backing from the thinner board (these have angles cut on top to match the roofline) and applying them to the end walls. They should be flush with the edge of the wall. Now apply the remaining trim boards so that they overlap the edges of the narrow boards giving an even corner.



4



5



6A