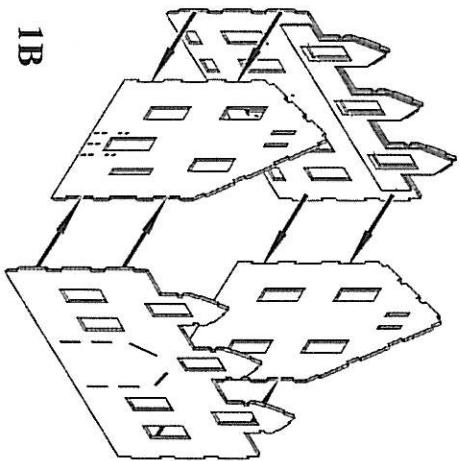
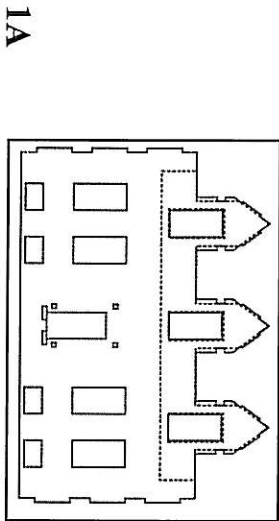
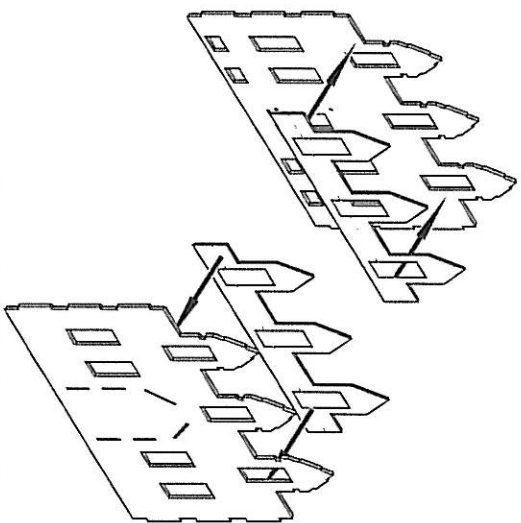


# LASER-ART STRUCTURES by BRANCHLINE TRAINS



## Constructing the shell:

**1A)** We'll start by adding the inner support walls to the inside of the upper front and rear walls. These will help keep the dormers from breaking during assembly. Use the three roof peaks to align the inner wall, see diagram. Apply the supports by removing the peel-and-stick backing from them, then pressing them into place on the inside of the wall panels.

**1B)** Start construction of the main walls by gluing the front wall assembly to the two end walls, then glue the rear wall into place. Note that each wall precut notches and tabs in them to help align them properly. Check that all of the corners are square and set the completed assembly aside to dry.

If you haven't painted the main walls yet do so now.

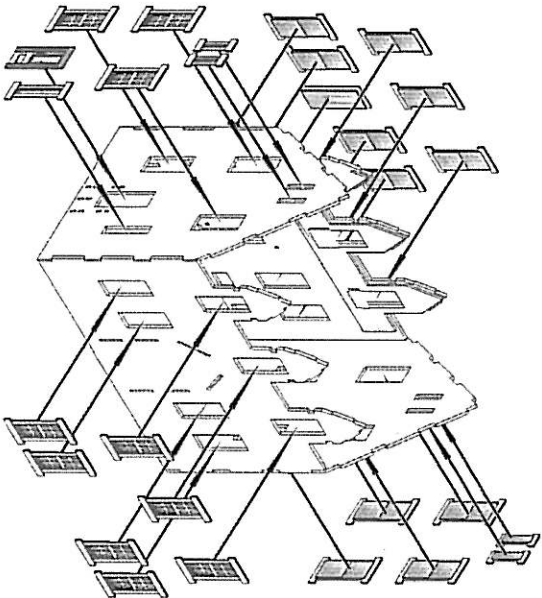
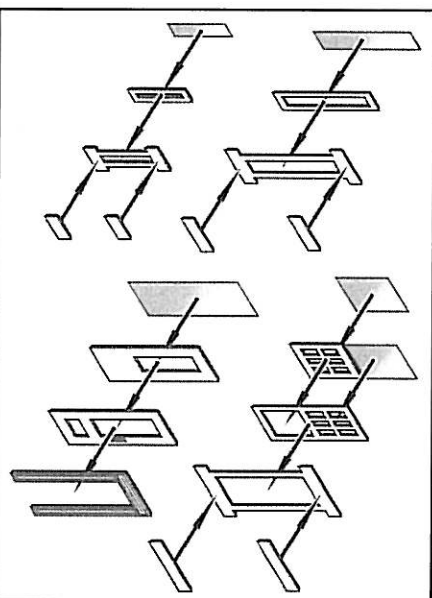
## Windows and doors:

**2A)** Paint the window frames while they are still on the sheet. Any visible edges can be touched up later.

To assemble the windows, first remove the peel-and-stick from the lower sash and apply a section of clear window glazing to it. Now do the same with the upper sash and frame making sure to keep the edge of the glazing flush with the top edge of the frame. Now stick the lower sash into place on the frame. Note that it is possible to position the lower sash in an open position if desired. Now take the window frame and remove the peel-and-stick from it. Center the window sash assembly into the frame and press into place. Finally, add the upper and lower trim rails to complete the window.

It is best to place the window assemblies into their openings as they are done - the peel-and-stick adhesive on the frames will be enough to hold them into place. Refer to the diagram for placement.

The doors are also built up from layers. To construct the doors start by removing the backing from the inner door panel and apply the clear plastic glazing to it. Now remove the backing from the outer door panel and attach it to the inner panel. Now apply the outer door frame to the door panels.



**2A**

As with the windows, it is best to place the window assemblies into their openings as they are done - the peel-and-stick adhesive on the frames will be enough to hold them into place. Again, refer to the diagram for placement.