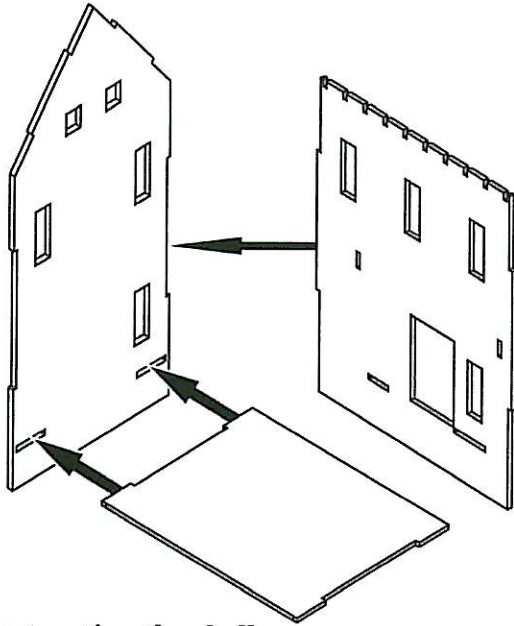


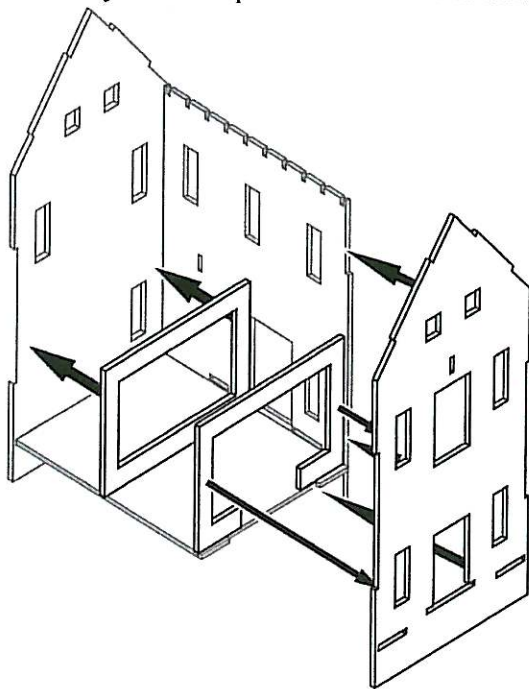
**Before you begin:**

We recommend that you read through the instructions as well as the picture diagrams before you begin each step. This will help prevent any assembly mistakes. Dry fitting pieces before you glue will help as well.

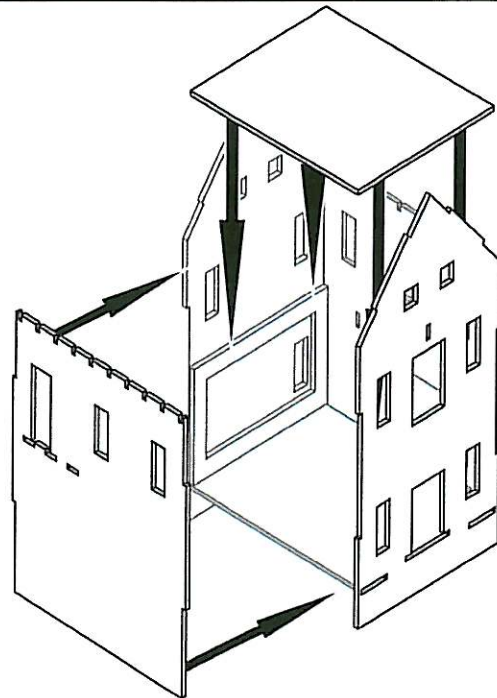


**Constructing the shell:**

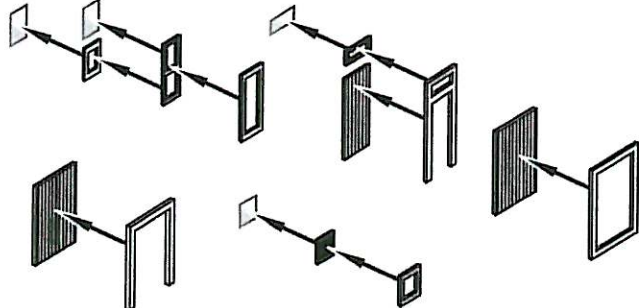
**1A)** Start construction by gluing the floor into the slots in the rear wall as shown then glue the right side wall to the rear wall. If you want to paint or stain the do so now.



**1B)** Now add the front wall, gluing it to the right side wall and floor. Next, glue the two pieces of inner framing to the inside of the front and rear walls. Note that the "C"-shaped support piece mounts to the front wall with the opening on the bottom in order to clear the front door opening.



**1C)** Now glue the left wall into place, followed by the upper floor section. (The floor should rest on the top edge of the two sections of inner framing). Again, if you want to paint or stain the do so now since it will be closed in later. This is also a good time to paint the outer walls of the building before proceeding.



**Windows and doors:**

**2A)** The window and door components are found on the 1/64 trim sheet. We find it easiest to assemble each window with some of the parts still attached to the sheet, and then to install each window as it is completed. It is also easier to paint the window components while they are on the sheet and before they are assembled.

The windows are assembled by first removing the peel-and-stick backing from the main window sash while it is still on the parts sheet, then pressing a piece of clear glazing into place. Now do the same with the lower sash. Now remove the lower sash and press it into place on the main window frame. Now remove this assembly and press it onto the outer window frame. Finally, remove the completed window from the parts sheet and install it into its wall (see diagram 2B for placement). The peel-and-stick backing on the frame will be enough to hold them in place.