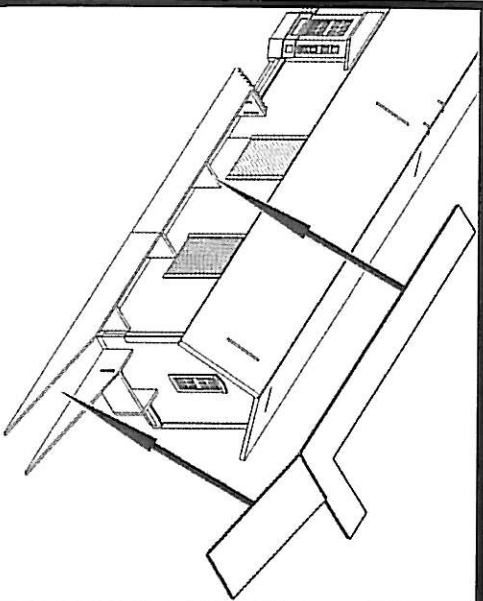


LASER-ART STRUCTURES by BRANCHLINE TRAINS

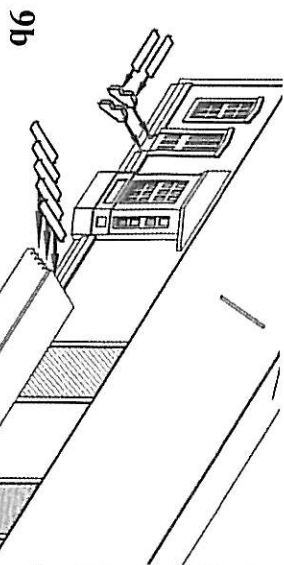


station. Glue the remaining two wall sections into place as shown on the diagram. You will find some extra strips of 1/16" plywood on the sub-wall sheet. These can be trimmed to length and applied to the back of the loading dock walls for added support if desired.

Install the loading dock bumper below the two rear loading doors apply just below the doors as shown.

9B) Add the loading dock decking by removing the backing from the piece and pressing it into place on top of the dock walls. The ramp area will need to be folded slightly downward before installation. Once the decking is in place, add the stair treads to the stringers. This is also a good time to assemble the two stairs to the doorway. Note that the top tread on these steps is notched to clear the edges of the door.

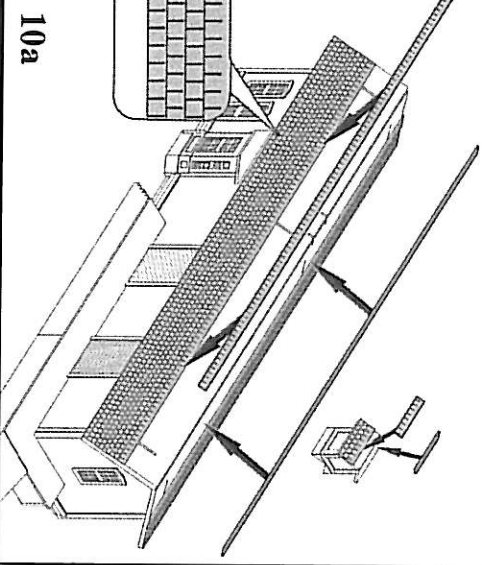
Shingles:



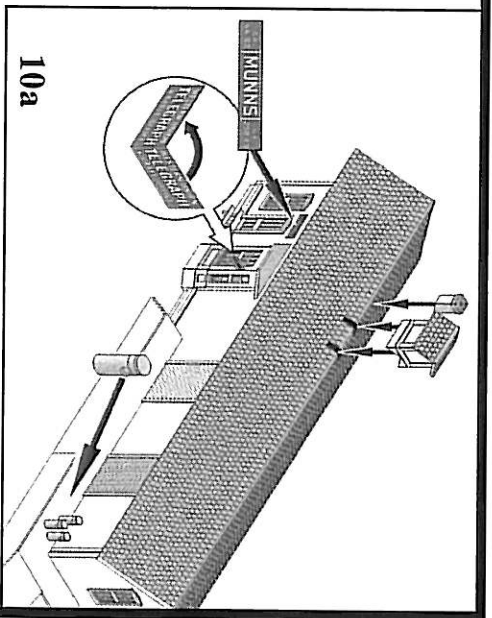
9b

10A) Starting at the bottom edge, apply the paper shingle strips one at a time using white glue, overlapping each and staggering each strip as you move upward (see diagram). Do the same on the cupola roof as well. Some of the extra paper can also be used to create a roof cap for each roof peak.

Once the glue is dry paint the shingles to represent a slate roof. We like to use weathered black but any dark bluish gray will work. A few extra minutes spent on the roof really pays off since it is so visible when the structure is in place on the layout. For some added detail you can pick out individual slates with slightly lighter or darker shades of gray. Another effective technique is to use a knife blade to lift up the front edge on a few of the shingles for some added relief. Just don't overdo it here unless you want the look of a dilapidated roof. Finally, add a thin wash of black and once this is dry brush the shingles with some vertical streaks of a lighter color to pick out the highlights. You can refer to the photo on the box label for some ideas.



10a



10a

Final Details

10B) Once the paint on the shingles is dry use a sharp knife blade to remove the shingles over the slots for the cupola, then glue the cupola into place. The resin chimney can be installed in one of two ways. You can either sand the bottom of the chimney to match the angle of the roof then cement it into place or you can cut a small hole into the roof and mount the chimney into it. Either way, make sure to paint the chimney before installation. We have included a few vintage signs for your station. The Munns station sign mounts over the door to the waiting room. The Western Union Telegraph sign gets folded onto itself and applied to the operator's bay.

Munnsville was in the dairy region of upstate New York, so we've included a few milk cans to add to the platform for the next southbound milk train to pick up.

Your kit is now completed and ready to for your layout. We hope you've enjoyed this kit.

For a full list of our products, see our web site at www.branchline-trains.com