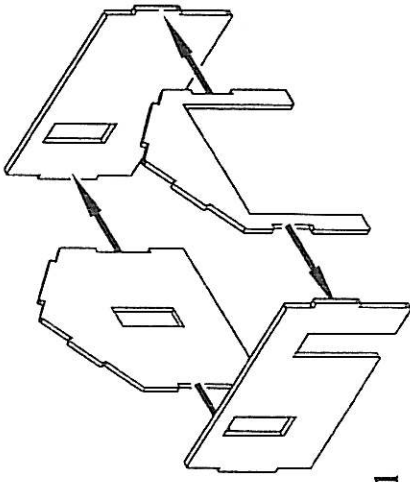


# LASER-ART STRUCTURES by BRANCHLINE TRAINS

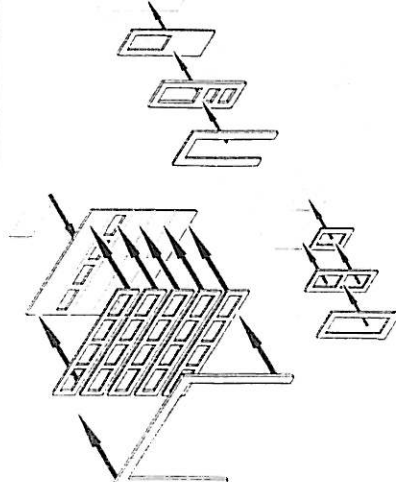


## Constructing the shell:

1) Start by gluing the four garage walls together. Check that all of the corners are square and set aside to dry.

## Windows and door:

2) To assemble the windows, first remove the peel-and-stick from the lower sash and apply a section of clear window glazing to it. Now do the same with the upper sash and frame making sure to keep the edge of the glazing flush with the top edge of the frame. Now stick the lower sash into place on the frame. Note that it is possible to position the lower sash in an open position if desired. Now take the window frame and remove the peel-and-stick from it. Center the window sash assembly into the frame and press into place. It is best to install each window as you go. Simply press the completed window assembly into the opening in the wall. The peel-and-stick adhesive will be more than strong enough to hold the window in place.

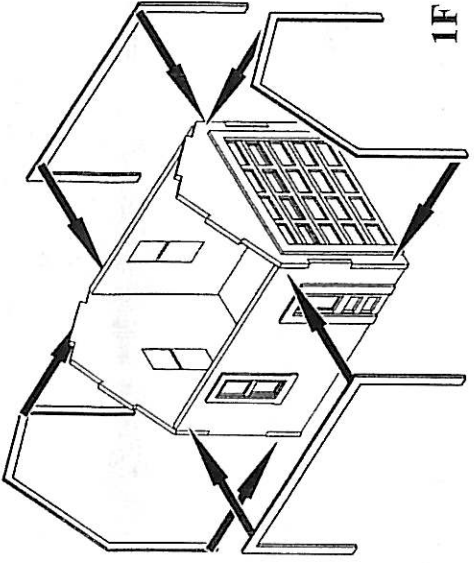
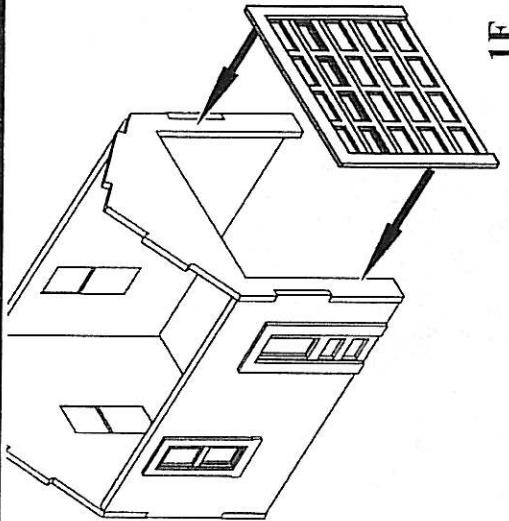
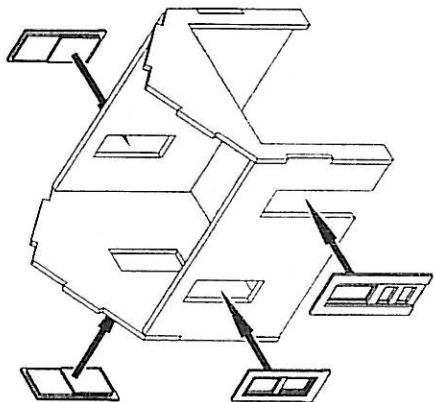


Assemble the main garage door by first applying the clear window to the inner door using the peel-and-stick adhesive to hold it in place. Now attach the outer door panels to the inner panel. Finally, attach the outer frame and press the completed door into place.

The entry door is assembled in the same manner, first apply the glazing, then the outer trim panel, and finally the frame. Install the completed door into the opening on the garage side wall.

## Applying the windows and door:

3) It is best to place the various window assemblies into their openings as they are done. The peel-and-stick on the frame will be more than enough to hold them into place.



## Trim:

4) Starting with front of the garage. Press the trim piece into place making sure it is flush with the side walls and the top edge. Apply the rear trim section in the same manner. Now add the two side trim pieces. These should overlap the front and rear trim, giving you a nice even corner.