

There are two vertical trim boards that go between the two sets of loading doors – see diagram.

Roof brackets:

9) Apply the roof brackets by gluing the into the slotted openings on the walls of the station. Note that the end supports differ from the others so make sure you install the correct brackets in the slots.

Sub roof panels and eave brackets:

10A) Glue the two sub roof panels into place with the scribed sides are facing downward, locating them using the tabs on the end walls.

10B) Apply the two roof end trim panels brackets onto each end of the subroof panels as shown.

Roof shingles:

11) There are two sheets of roofing paper included to represent the roofing shingles. Starting at the bottom edge of each roof panel, glue down each strip, working your way up the roof. Make sure you overlap each piece and stagger the shingle joints as shown in the diagram. The roof panels are longer than the paper sheets so you will need to piece the sections together end to end as you go. Top off the roof with a strip of paper to represent a roof cap.

Chimney, signs, and steps:

12) A resin chimney is included with your kit. Cement this to the roof as shown.

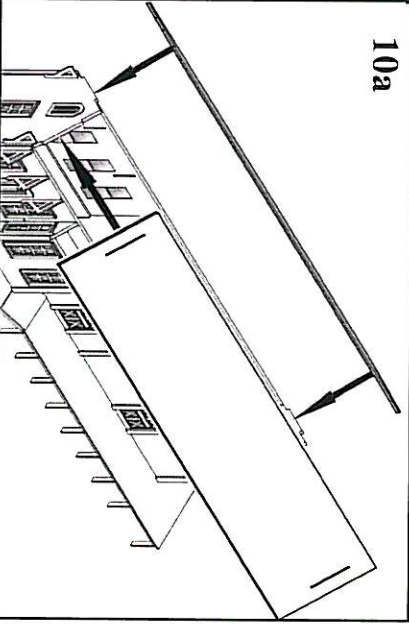
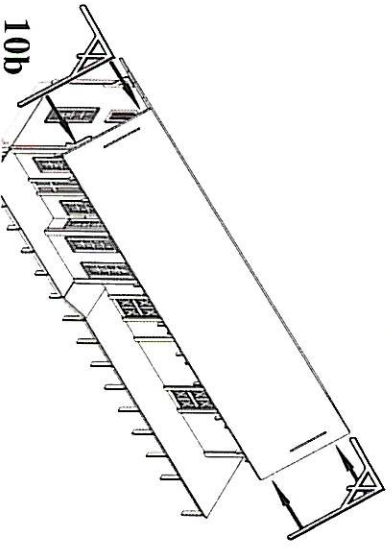
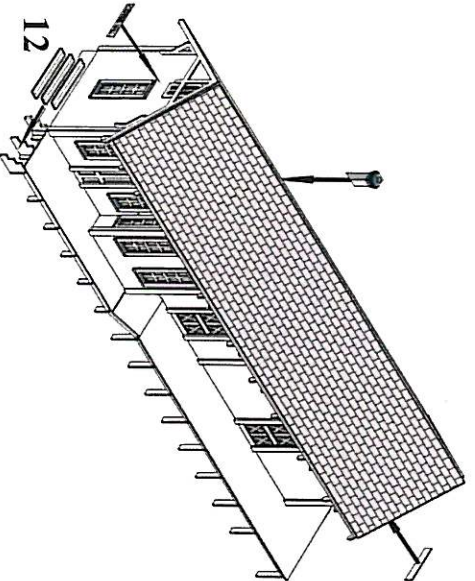
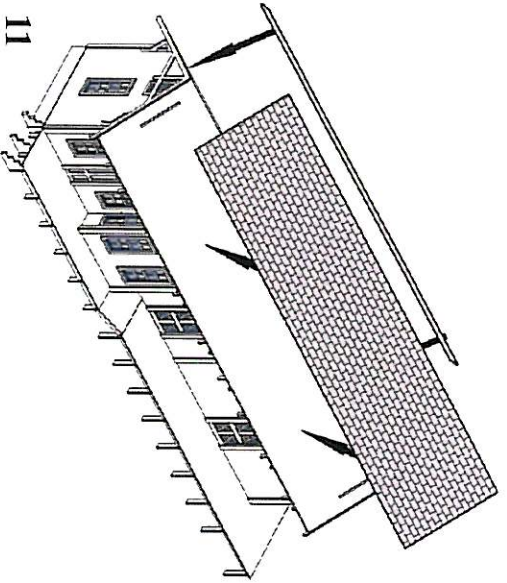
Apply the peel and stick steps onto the stair treads as shown.

We have included some period signs. These can be applied as shown. The Telegram sign needs to be folded in half and glued together. It can then be glued to the side trim board of the station.

Your kit is now completed and ready for your layout.

For a full list of our products, see our web site at

www.branchline-trains.com



10b

10a

9

11

12

