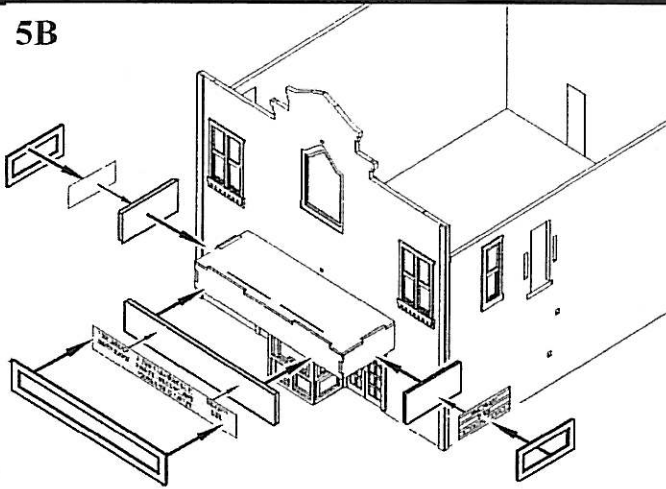


LASER-ART STRUCTURES by BRANCLINE TRAINS

5B



5B) Add the outer marquee panels to the sign. We have provided a few paper marquee signs that can be cut out and glued on center on the marquee. Once the sign is in place you can apply the outer trim as shown.

Sub roof:

6) Glue the sub roof panels onto the tabs on top of the front and rear walls. Note that sub roof should overlap the rear wall.

Front wall details:

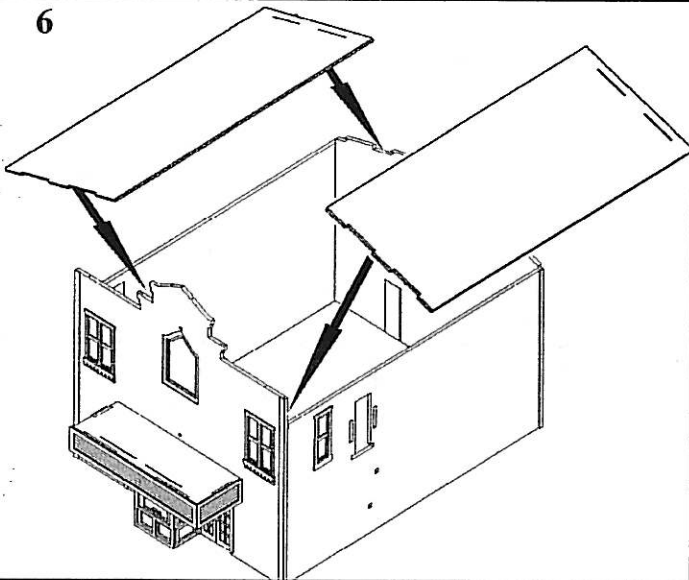
7A) Remove the peel-and-stick backing from the bottom trim panel and press it into place centered above the marquee roof. Next, apply the two upright columns with the lower panel—see diagram for alignment - and press them into place. Lastly, apply the top panel.

7B) Next add the detail strips to the trim panels starting with the large lower strip placing it along the top edge as shown. Now apply the four smaller strips on the columns as shown. Finally, apply the two upper trim pieces on top of the other.

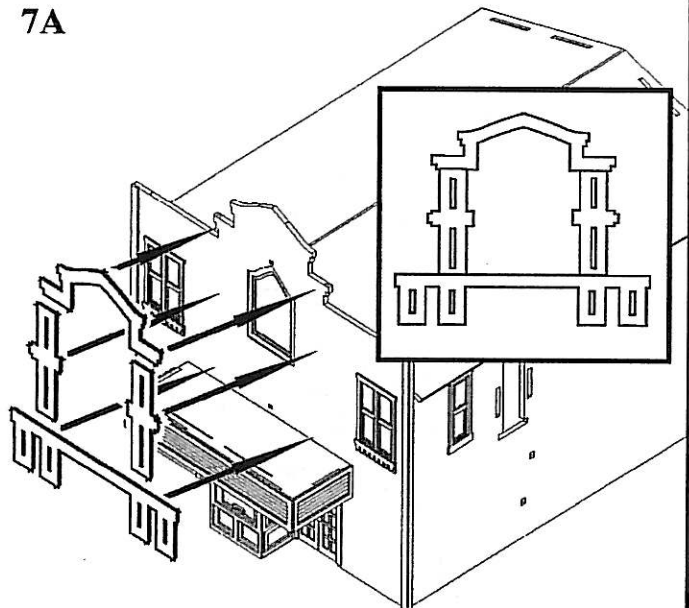
Stonework:

8) Remove the backing and press the two sections of stonework into place, one on each side of the entrance doors. Once in place paint the foundation in your choice of colors, then apply a wash of light gray for mortar.

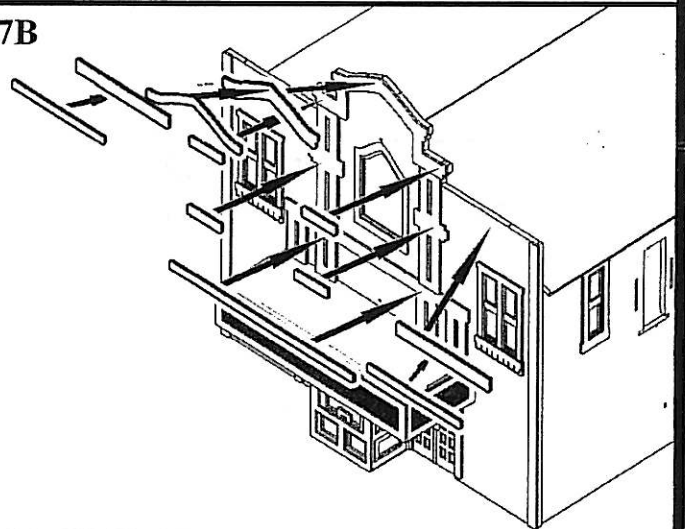
6



7A



7B



8

