

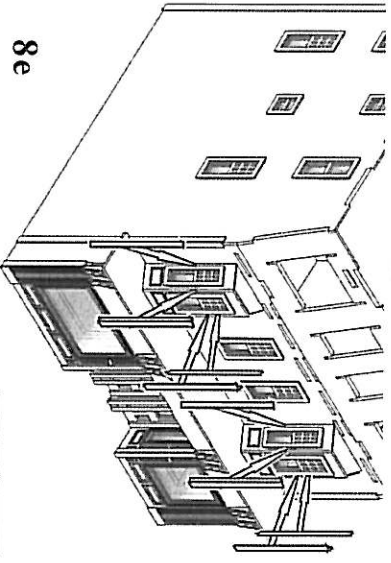
8d

8D) Assemble the windows as you did the other windows earlier. Place the completed window into place as shown in the diagram.

8E) The trim pieces can be added to each bay window next. The trim with the scribed line down the middle should be folded slightly and placed between the window sections. The rest of the trim boards can be added to the edges where the bay meets the front wall.

Upper roof overhang:

9) The horizontal trim above the lower bays is made from three pieces - two smaller and one larger piece. Starting with a smaller piece, tab this into the lower set of slots on the upper front wall (See diagram). Now glue larger one into the next higher set of slots and to the top of the previous section. Finally, glue the remaining small section on top of the other two and into the uppermost slots.



8e

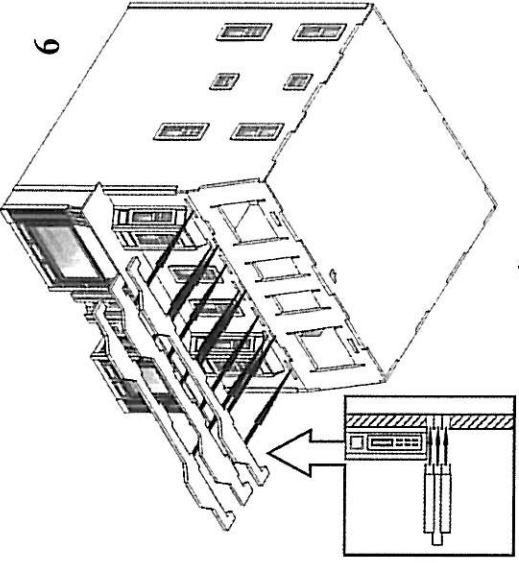
Wall top trim:

10) Now add the upper trim pieces along the top of the walls. There are three long - the side two pieces each have an angle on one end to match the angle of the front wall. Apply these first to the top edge of the walls followed by the rear piece which should overlap the side pieces at the corners. Now add the corner trim to the sloped upper wall as shown.

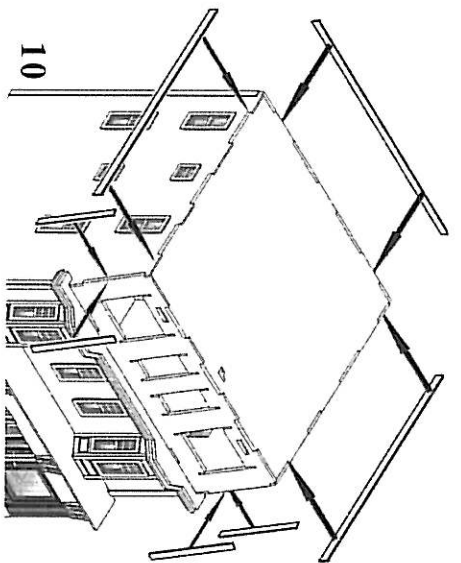
Third floor bay windows:

11A) Note that there are two different types of bay window support braces - a smaller pair and a larger pair. The larger supports mount to the top as shown. Glue the four bay window support braces them into appropriate slots in the upper front wall as shown.

11B) Glue the small angled side wall inserts for the bay windows into the slots as shown



9



10

