

If you choose to add shingles you can use plain or scalloped tile shingles (or a mixture of the two). Glue the shingles into place so that they overlap slightly and the joints are staggered (see diagram). Note that the shingling needs to be placed between the window openings only.

**Subroofing:**

6) Glue the top sub roof panel into place with the small letter "F" (scribed into the panel) up and to the front as shown in the diagram. You may want to tape the edges in place or weight the roof down with a book until dry.

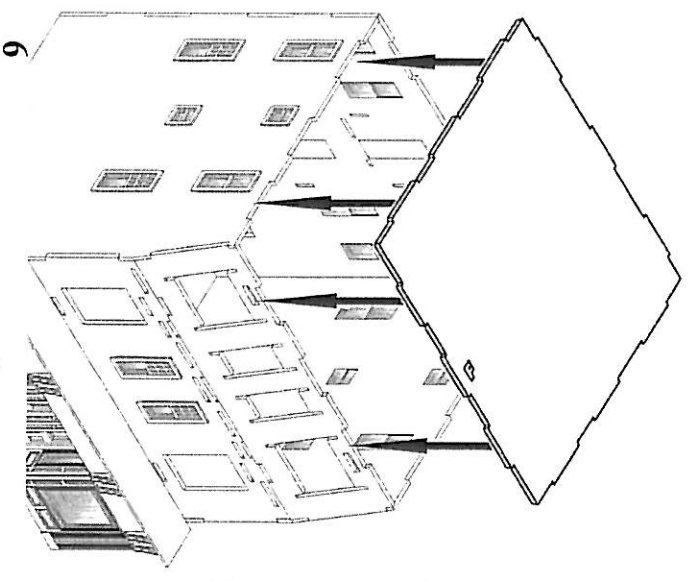
**Trim:**  
7) Apply the trim one corner at a time. Note that each corner is made up from two trim pieces, one a bit wider than the other. Apply the narrower section into place flush with the edge of the walls, then apply the wider piece so that it overlaps the edge of the first giving you a nice clean corner. Repeat for all corners of the building as shown.

**Second story bay windows:**

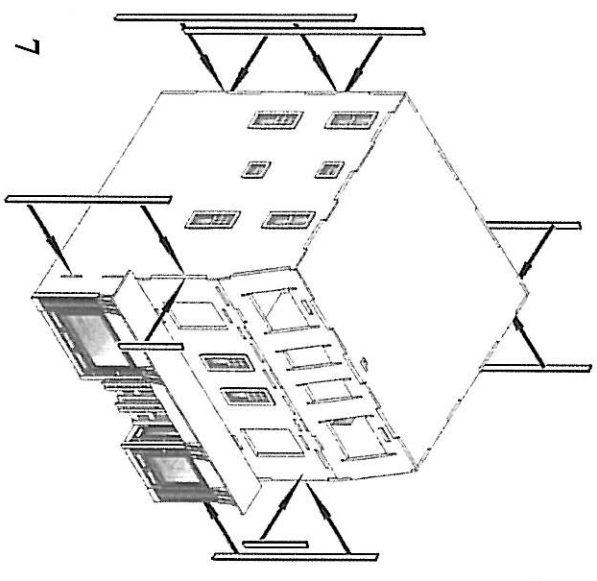
8A) To assemble the bay windows on the second story first take the four bay wall support braces and glue them into the slots in the front wall as shown.

8B) Now identify the two bay window wall sections for the second story - they are slightly taller than the upper floor ones. Fold these walls on the scribed lines as shown. Press each bay window onto the angled support braces. The peel-and-stick adhesive should be enough to hold these in place, but you can add a dab of glue to the inside of the joints for extra security if desired.

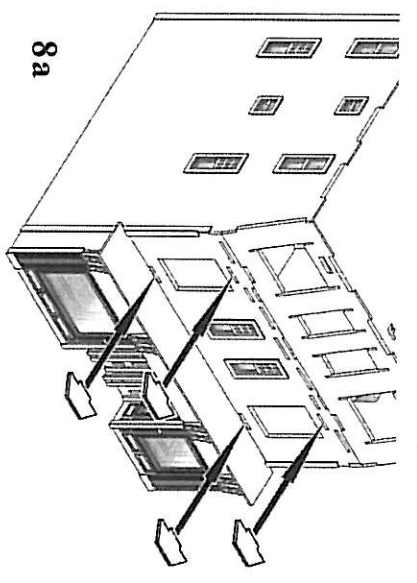
8C) Now place the bay window wall sections onto the inner panels you just installed. Apply the center wall section first followed by the two side panels.



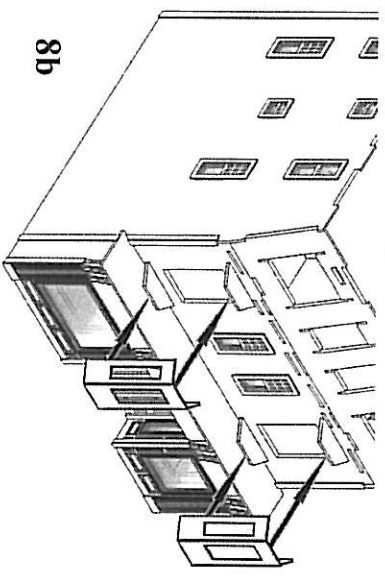
6



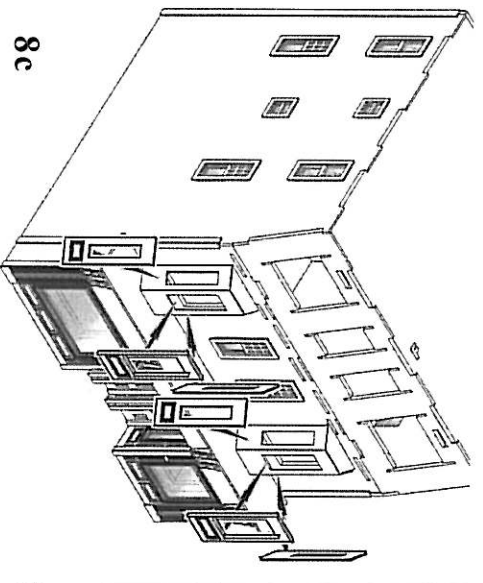
7



8a



8b



8c