

15a

The completed access hatch can be added anywhere you think it looks good. We have shown it centered as this would line up with the stairwells that would theoretically run through the center of the building. Sand the bottom of the resin chimneys flat if needed, then paint and install them on the roof where you think they look best. If you install them along the edge of the roof that there is no window directly below – that chimney flue needs somewhere to run!

Signs and front awnings:

15A) The sheet of paper signs can be cut out and placed around the building as desired. The front signs are sized to fit into the recesses above the front windows as shown.

15B) A section of printed lace curtain is also included for the front windows. Cut this slightly oversize and glue to the inside of the front walls behind the window.

15C) Lay the two pieces of wire onto the sheet with the awnings and bend and cut the wire into a shape that matches the edge of the awning as shown. Leave the ends long to allow mounting into the front wall. There will be three sizes total.

There are small scribed dimples along side the windows on the front wall. You will have to drill these holes out if you want to install the awnings. A #7/4 or #75 drill should do the trick. Insert the wire braces as shown and glue into place with ACC.

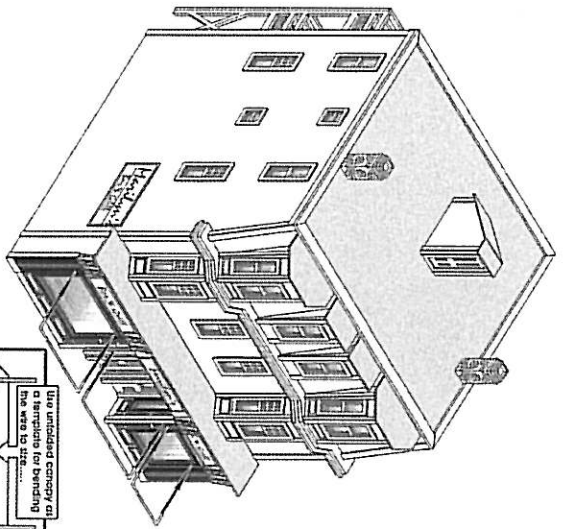
15D) Now cut the canopies out using a sharp blade and fold them as shown. The folded canopies can be glued over the wire which and to the tops of the windows to help hold them up in place.

Your kit is now completed and ready for your layout. We hope you've enjoyed this kit. If you have any problems or comments, please contact us at:

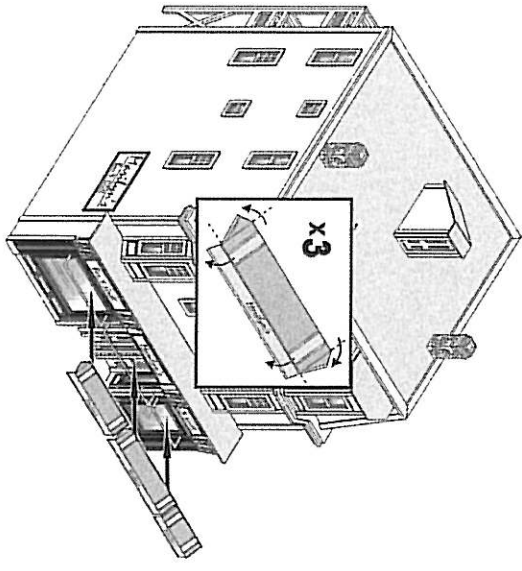
Branchline Trains

323 Park Ave. East Hartford, CT. 06108

For a full list of our products, see our web site at www.branchline-trains.com



15c



15d

15b

