

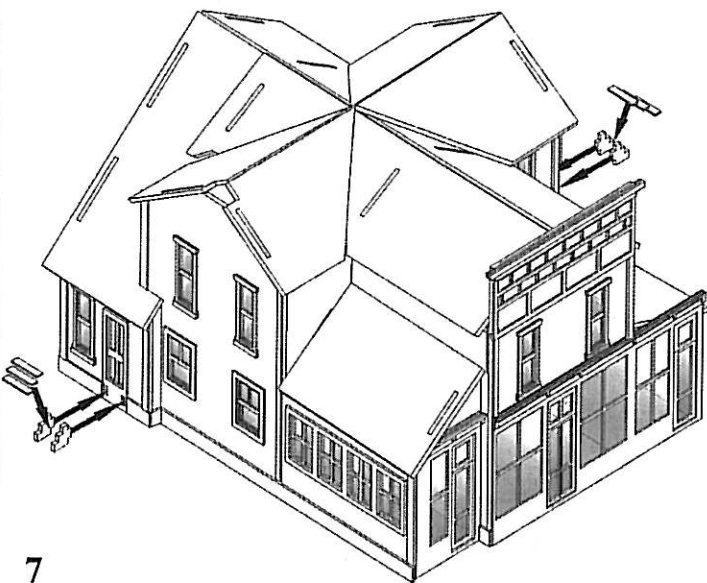
Foundation:

6) You can now add the foundation pieces. Remove the backing from each piece and apply to the lower areas of the store. Each piece has been cut and sized to fit into the appropriate area, see diagram for placement.

Once the stonework is in place, paint it gray or brown. Spend a few minutes and pick out some of the individual stones with lighter and darker shades of your base color. Once this is dry follow with a wash of light gray or black to represent the mortar between the stones (Light gray will make the foundation appear newer, black older). Finally dry brush some light gray or tan highlights into the stones.

Stairs:

7) Glue each stringer into the holes in the below each of the side doorways. Once the glue is dry, apply the steps by removing the backing from each piece and pressing them down to the tops of the stringers.



Paper roofing:

8) Two sheets of paper strips are included to be applied to the sub roof panels. The paper roofing can be glued into place with white glue. Both tarpaper and shingles are provided. Use the tarpaper for the small side additions and the shingles for the main roof. Overlap each strip or tarpaper roofing slightly as you work your way up the roof. Run each section slightly long then trim the paper flush with the edge once the glue is dry.

The tar paper can be painted a weathered gray or even red or green. Apply a thin strip of black along each seam with a fine brush or Sharpie marker to represent the tar sealant. Don't forget to seal where the roof butts up against a wall.

Make sure to stagger each row of shingles as shown to give the appearance of roofing shingles. Once all of the sections are papered, you can cap the tops of each one off with a folded strip to complete your roof. Now the shingles can be painted and weathered as desired.

Chimneys:

9) You can apply the two resin chimneys in one of two ways. Each chimney can be glued directly to the roof by sanding the base to the proper angle, or you can cut a small hole into the roof and place your chimney down through it. Paint and weather the chimneys as you choose.

