

4A

Store front entrance walls:

4A) Remove the backing from the front showroom window trim pieces and apply them to the two sections of front wall panels as shown. The three sets of trim pieces apply on top of each other to form a three dimensional molding.

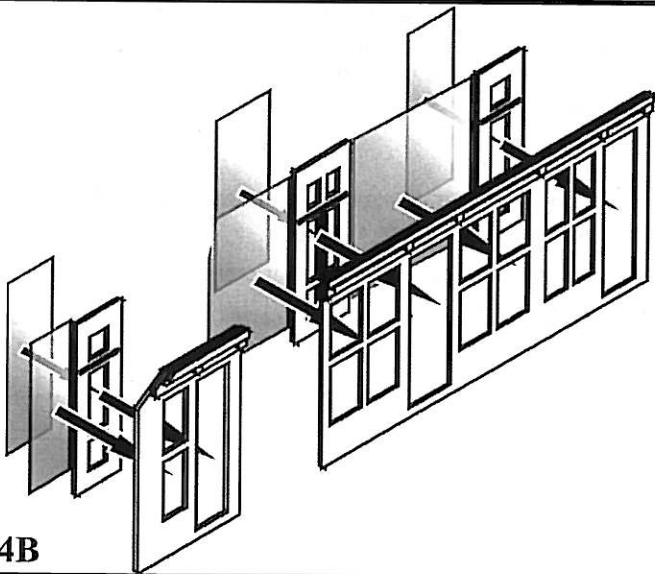
4B) Add the clear glazing to the showroom windows and doors using the peel-and-stick adhesive on the back of the showroom wall to hold it in place. Once the glazing is in place, press each door to the rear of the front walls as shown.

4C) Now apply the front wall sections to the front of the store. The peel-and-stick adhesive should be enough to hold these into place, but you can use a bit of glue for extra support.

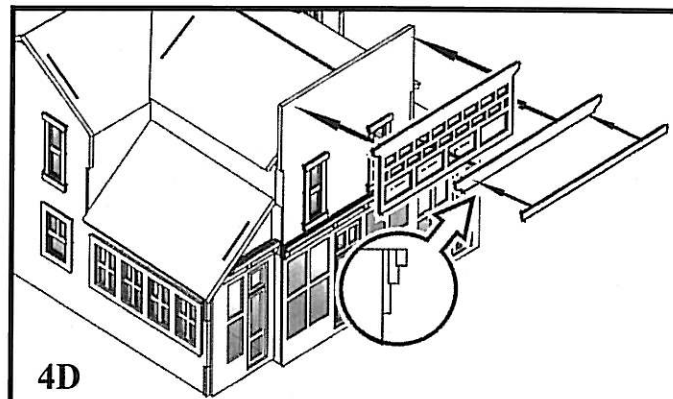
4D) Remove the backing and apply the larger detail trimwork to the top of the front wall. Now add the two trim boards on top of the larger piece to form the three dimensional molding

Store trim:

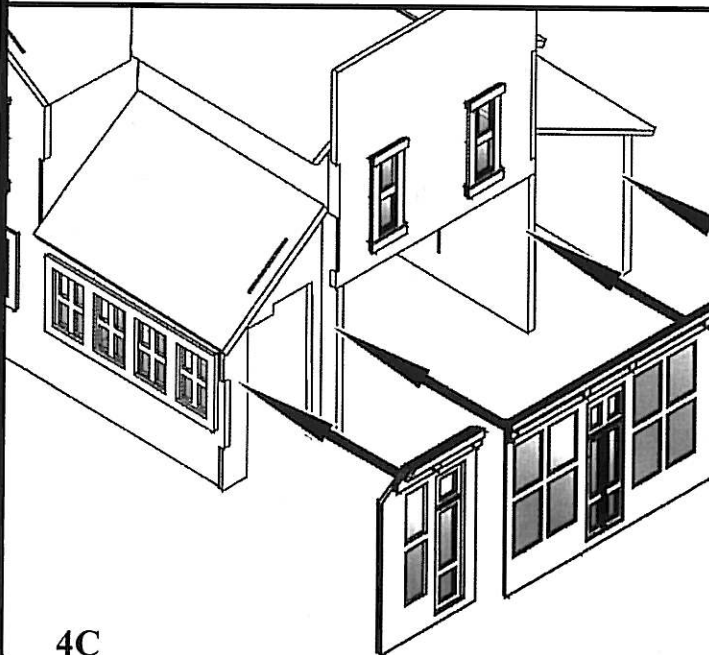
5) Apply the trim one corner at a time following the diagram. Note that each corner consists of a wide and narrow piece. Apply the narrow section first, flush with the edge of the wall. Now apply the wider trim section so that it overlaps the edge of the narrower piece to form an even corner.



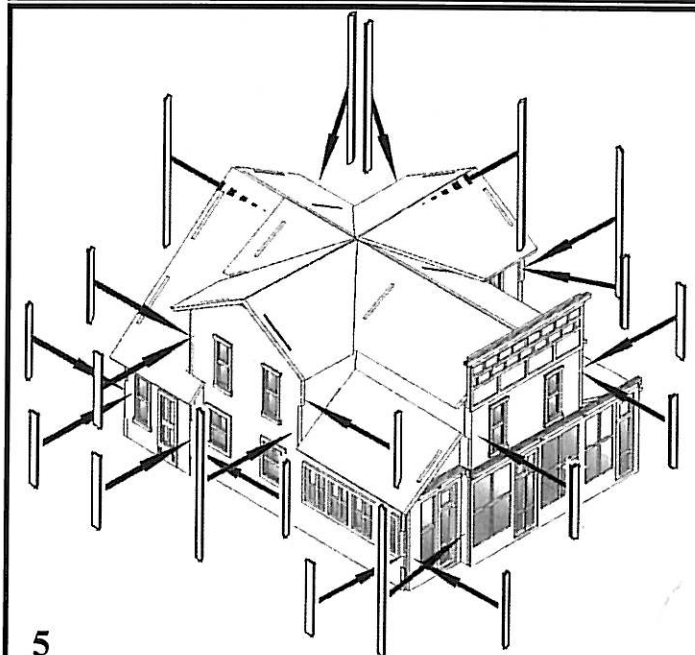
4B



4D



4C



5