

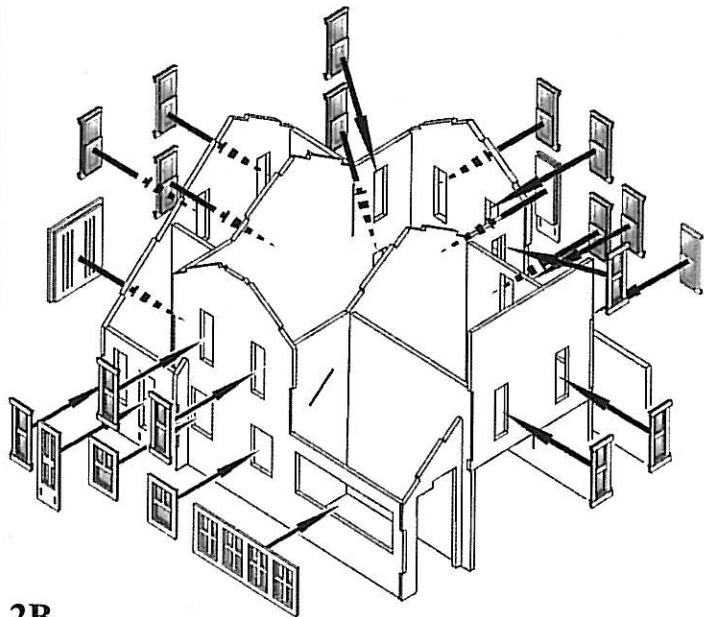
2A

Windows and doors:

2A) To assemble the windows, first remove the peel-and-stick from the lower sash and apply a section of clear window glazing to it. Now do the same with the upper sash and frame making sure to keep the edge of the glazing flush with the top edge of the frame. Now stick the lower sash into place on the frame. Note that it is possible to position the lower sash in an open position if desired. Now take the window frame and remove the peel-and-stick from it. Center the window sash assembly into the frame and press into place. Refer to the diagram to determine how each window is assembled.

It is best to place the window assemblies into their openings as they are done. See diagram 2B for placement. The peel-and-stick on the frame will be enough to hold them into place.

The doors are built up from layers. Remove the backing from the outer door trim panel and apply it to the backing panel as shown. Mount the outer frame section to the door, then insert the completed door into the wall opening. Again, refer to the diagram for placement.



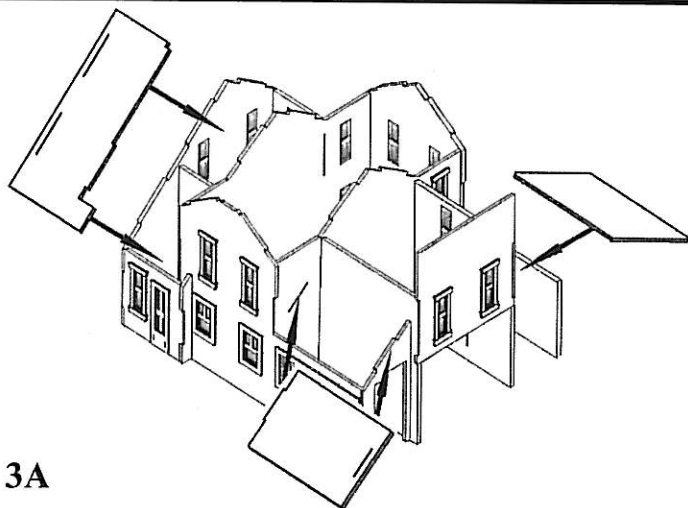
2B

Subroofing:

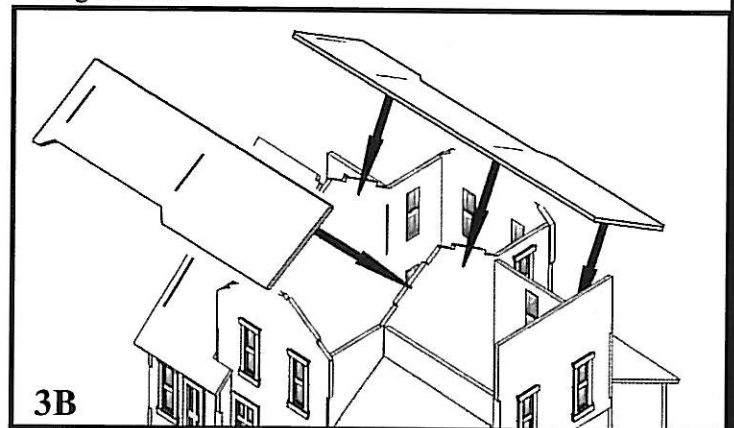
3A) Glue the sub roof panels for the rear roof and the two small side roofs into place as shown.

3B) Now glue the two main sub roof sections into place.

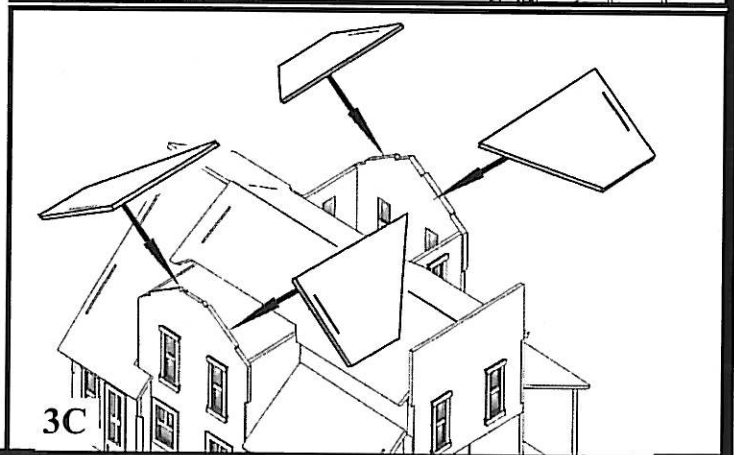
3C) Finally, apply the four sub roof panels to the side additions. If needed you can use a bit of tape to hold these in place until the glue dries.



3A



3B



3C