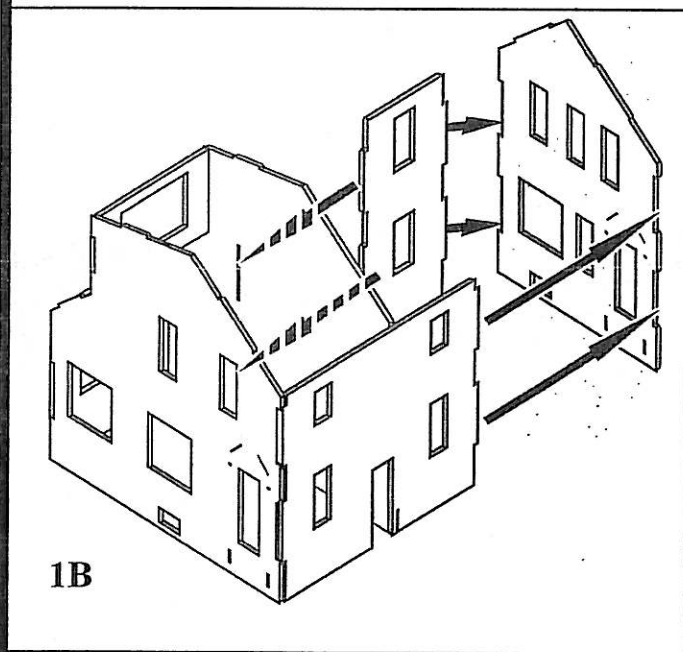
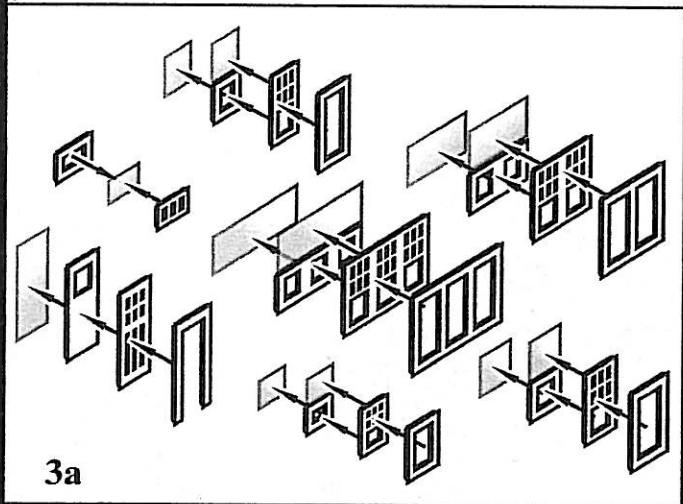


1A



1B



3a

Constructing the shell:

1A) Start by gluing the lower front wall to the side walls. the glue the rear wall into place to form a box. Next, add the upper front wall into place.

1B) Now glue the smaller side wall into the slots as shown, followed by the larger wall. See diagram. Check that all of the corners are square and set aside to dry. Once dry, paint the wall assembly before you apply the rest of the parts.

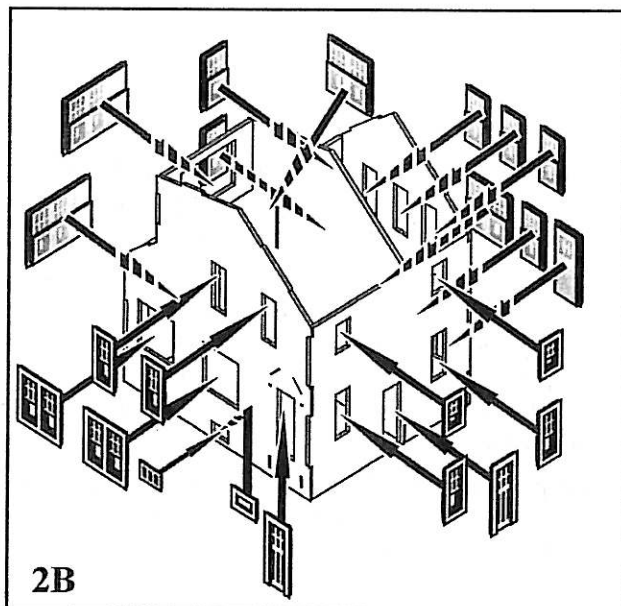
Windows and doors:

2) To assemble the windows, first remove the peel-and-stick from the lower sash and apply a section of clear window glazing to it. Now do the same with the upper sash and frame making sure to keep the edge of the glazing flush with the top edge of the frame. Now stick the lower sash into place on the frame. Note that it is possible to position the lower sash in an open position if desired. Now take the window frame and remove the peel-and-stick from it. Center the window sash assembly into the frame and press into place.

It is best to place the window assemblies into their openings as they are done. See the diagram for placement. The peel-and-stick on the frame will be enough to hold them into place.

Assemble the basement windows by removing the backing from the window and applying the glazing to it. Now place the window into the opening and apply the window frame to the back of the window on the inside of the house. This will hold the window into place giving you a recessed window.

The doors are built up from layers. Remove the backing from the outer door trim panel and apply it to the backing panel as shown. Mount the outer frame section to the door, then insert the completed door into the wall opening.



2B