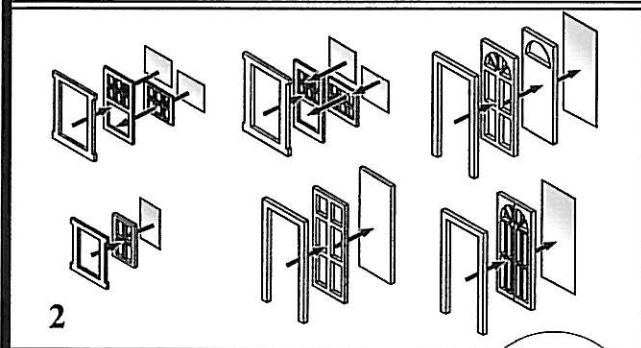


1

Constructing the shell:

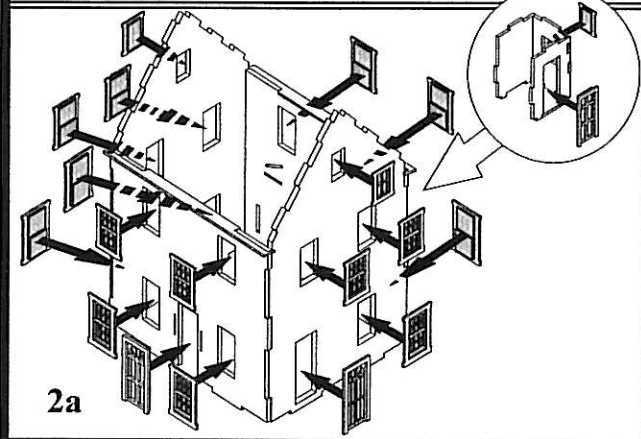
1) We'll start with construction of the main house walls. Take the front wall assembly and glue each side wall section into place. Follow by gluing the rear wall into place. You will see that each wall assembly has precut notches in it that will only line up with the proper adjoining wall. Check that all of the corners are square and set aside to dry. Once the main walls are dry, install the three small walls to make up the enclosed back entrance. These walls will fit into slots on the rear wall of the main house. Lastly, install the two roof trim pieces as shown. These glue into the two tabs in the front and rear of the house.



2

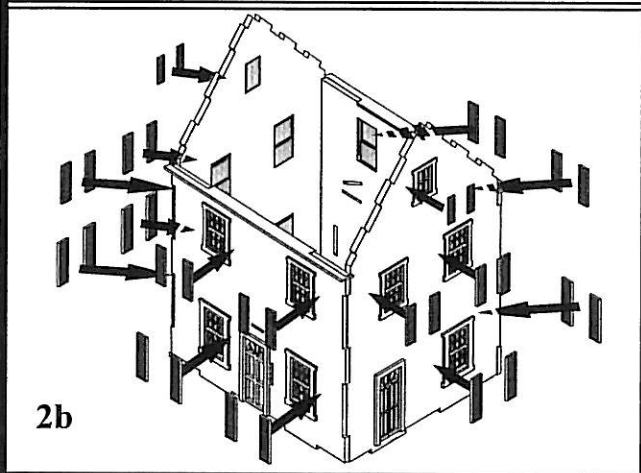
Windows and Doors:

2) There are 17 window assemblies needed. The parts for these are found on the 1/64 trim sheet. First remove the peel-and-stick from the lower sash and apply a section of clear window glazing to it. Repeat with the upper sash and frame it being sure to keep the edge of the glazing flush with the top edge of the window. Now stick the lower sash into place on the frame. For a little interest and variety it is possible to position the lower sash in an open position. Now take the window frame and remove the peel-and-stick from it. Center the window sash assembly into the frame and press into place. It is best to place the various window assemblies into their openings as they are done. The peel-and-stick on the frame will be more than enough to hold them into place. For the correct location of each window refer to diagram 2a.



2a

There are 3 door assemblies located on the front side, and rear of the house. The front door is a solid door with half round window on top. The side door is a full glass paneled door and the rear door has no window at all. Locate the doors and trim pieces on the 1/64 trim sheet. Remove the peel-and-stick from each door and apply the window glazing or rear panel to the back of it.



2b

Now apply the peel-and-stick door trim to the door assembly, making sure that the door is centered on the trim side-to-side and flush at the bottom. Now insert the completed assembly into the door opening and press the trim into place.

Shutters

2b) Peel-and-stick shutters are included in three sizes. The larger shutters are for the first story windows, the medium shutters are for the second story windows. The three sets of smaller shutter are for the two attic windows and for the window at the rear entrance.