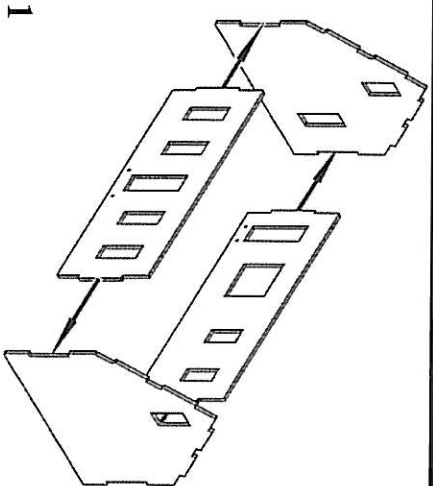


LASER-ART STRUCTURES by BRANCHLINE TRAINS



1

Constructing the shell:

1) Start construction by gluing the front wall assembly to the two end walls, then glue the rear wall into place. Note that each wall precut notches and tabs in them to help align them properly. Check that all of the corners are square and set the completed assembly aside to dry.

If you have not already painted the walls, do so now.

Windows and Doors:

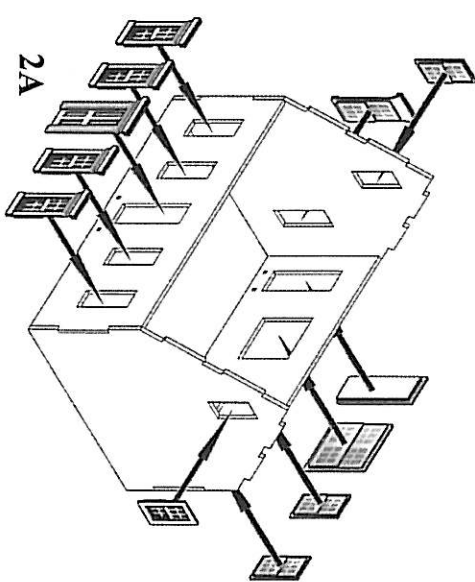
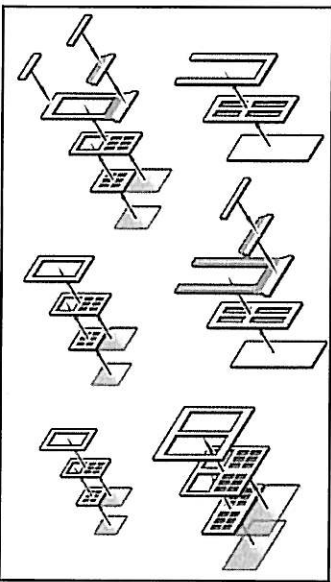
2A) We find it is easier to paint the window frames while they are still on the sheet. Any visible edges can be touched up later.

To assemble the windows, first remove the peel-and-stick from the lower sash and apply a section of clear window glazing to it. Now do the same with the upper sash and frame making sure to keep the edge of the glazing flush with the top edge of the frame. Now stick the lower sash into place on the frame. Note that it is possible to position the lower sash in an open position if desired. Now take the window frame and remove the peel-and-stick from it. Center the window sash assembly into the frame and press into place. Finally, add the upper and lower trim rails to complete the window.

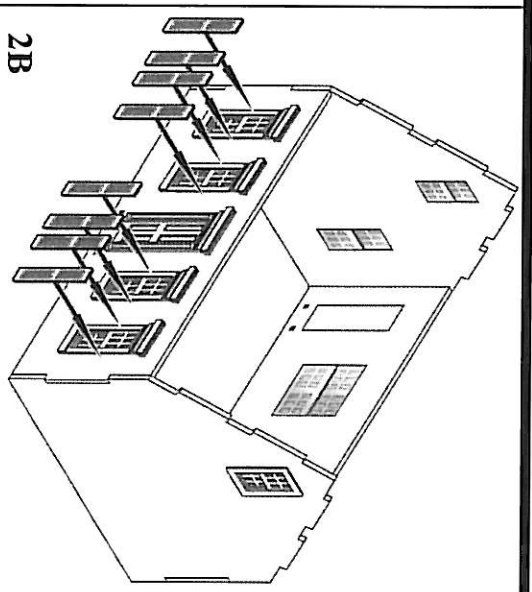
It is best to place the window assemblies into their openings as they are done - the peel-and-stick adhesive on the frames will be enough to hold them into place. Refer to the diagram for placement.

The doors are also built up from layers. To construct the doors start by removing the backing from the inner door panel and apply the clear plastic glazing to it. Now remove the backing from the outer door panel and attach it to the inner panel. Now apply the outer door frame to the door panels.

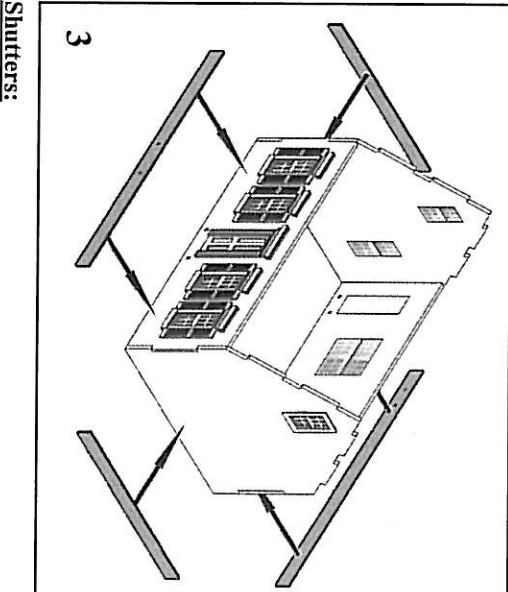
As with the windows, it is best to place the window assemblies into their openings as they are done - the peel-and-stick adhesive on the frames will be enough to hold them into place. Refer to the diagram for placement.



2A



2B



3

Shutters:

2B) Apply the peel-and-stick window shutters next to the front windows only. (The side and rear windows do not have shutters).

Foundation:

3) Install the foundation stonework by removing the peel-and-stick backing from each piece and pressing it into place along the bottom edge of the walls.