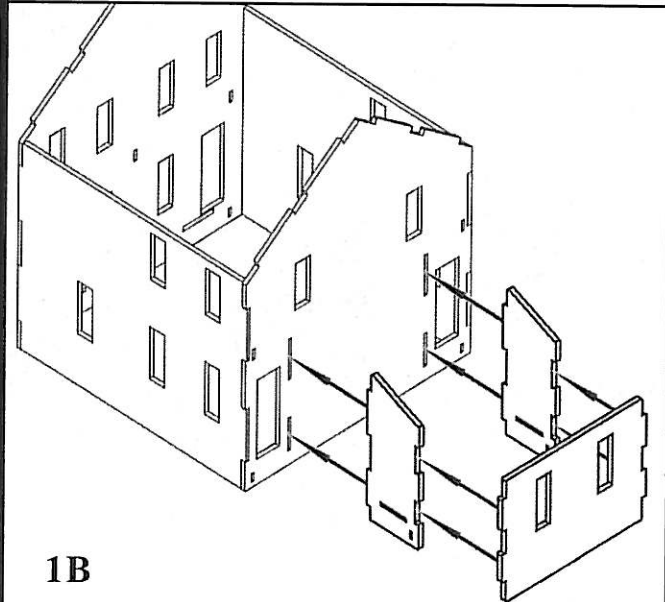


Constructing the shell:

1A) Start construction of the by gluing the four main walls together as shown. Check that all of the corners are square and set aside to dry.

1B) Glue the two rear extension walls into the slots in the rear wall, then glue the rear extension wall into place.



Windows and Doors:

2) We find it is easier to paint the window frames while they are still on the sheet. Any visible edges can be touched up later.

To assemble the windows, first remove the peel-and-stick from the lower sash and apply a section of clear window glazing to it. Now do the same with the upper sash and frame making sure to keep the edge of the glazing flush with the top edge of the frame. Now stick the lower sash into place on the frame. Note that it is possible to position the lower sash in an open position if desired. Now take the window frame and remove the peel-and-stick from it. Center the window sash assembly into the frame and press into place. Finally, add the upper and lower trim rails to complete the window.

It is best to place the window assemblies into their openings as they are done - the peel-and-stick adhesive on the frames will be enough to hold them into place. Refer to the diagram for placement.

The doors are also built up from layers. Remove the backing from the outer door panel and attach it to the inner panel, then apply the outer door frame to the door panels.

As with the windows, it is best to place the door assemblies into their openings as they are done - the peel-and-stick adhesive on the frames will be enough to hold them into place. Refer to the diagram for placement.

