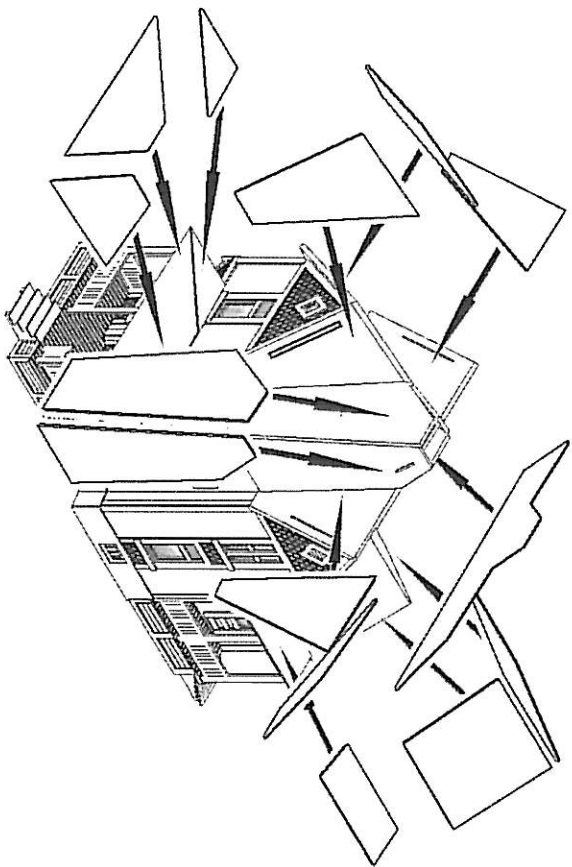


LASER-AIRT STRUCTURES by BRANCHLINE TRAINS



Shingles:

8) Pre-cut peel and stick plastic roofing shingles are included. These are pressed into place as shown in the diagrams. Start with the larger main roof panels, then install the smaller outer sections. Any small gaps between panels will be covered with trim in the next step.

Roof trim strips:

9) Several strips of thin styrene have been provided to use as roof peak trim and flashing. Each section will need to be cut to length and glued into place on each roof ridge line and valley using styrene cement. See diagram.

Once these strips have been glued in place you can paint the roof. Gray, dark red, green and tan are all good base colors for the shingles. You can paint the flashing in the roof valleys with either a copper color or a medium green to represent copper flashing. Once the paint is dry add a thin wash of black to bring out the joints and follow with a dry brushing of a lighter shade of your base color.

Chimney and Cellar doorway

10) The resin-cast cellar hatchway can now be applied by cementing it to the rear wall in the gap between the two sections of stone foundation pieces. Paint the chimney, then glue it into the hole in the center of the roof.

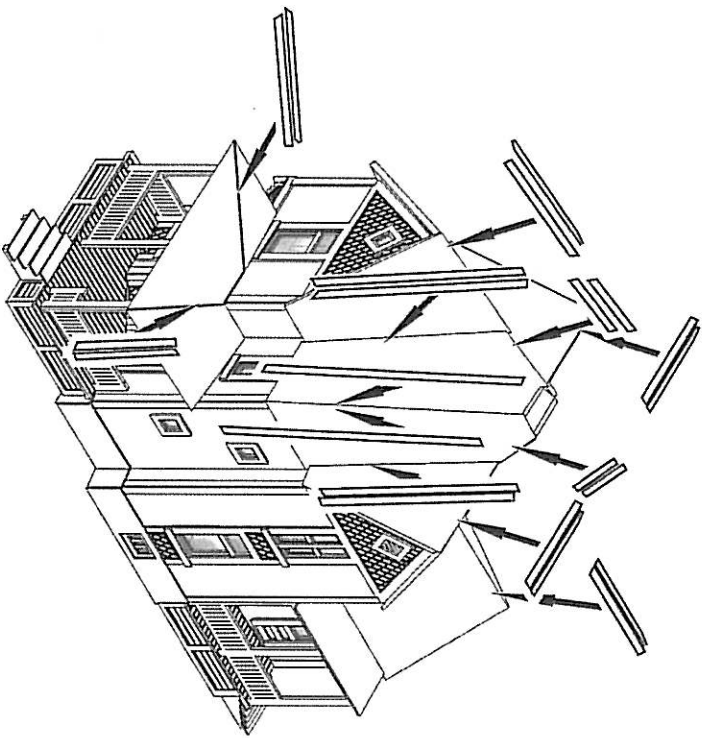
Your kit is now completed and ready for your layout. We hope you've enjoyed this kit. If you have any problems or comments, please contact us at:

Branchline Trains

333 Park Ave.
East Hartford, CT. 06108

For a full list of our products, see our web site:

www.branchline-trains.com



LASER-AIRT
STRUCTURES BY BRANCHLINE TRAINS

