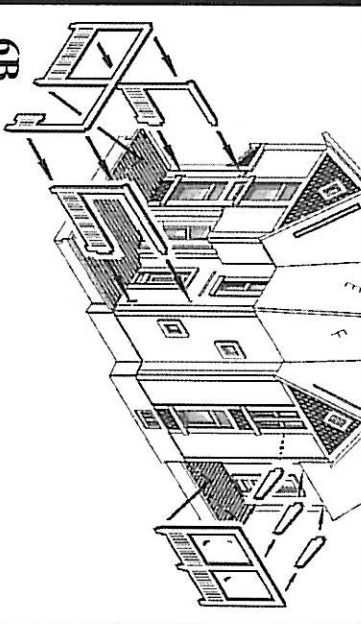


**Porch:**

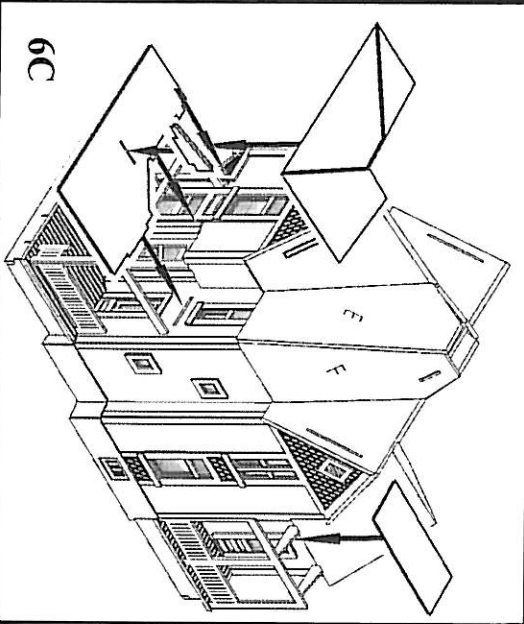
**6A)** Start construction of the porch by gluing the lower porch supports into both the front and side walls. Square them up, then glue the flooring into the slots in the side walls and onto the tops of the lower supports.

**6B)** Side porch: Glue the side porch roof supports into the holes in the right side wall. Next, glue the porch railing into the holes in the porch floor flooring and to the ends of the roof supports you just installed.

**Front Porch:** Glue the two side railings into the slots in the front wall, then glue the front railing into the holes in the porch floor and to the side railings as shown.



**6B**



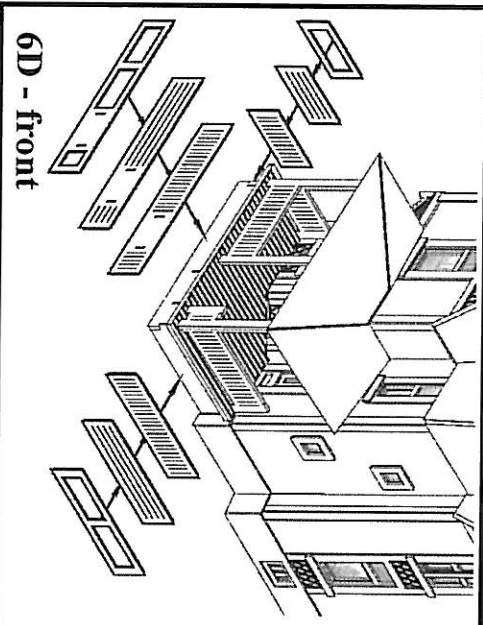
**6C**

**6C)** Glue the flat roof section to the top of the front porch, then glue in the small angled support piece into the slot in the center of it. Apply the porch roofing by removing the backing from it and pressing it into place on the supports. Fold the front roof panel slightly on the scribed lines before you press it into place - it should fit just under the second floor window sills once its in place.

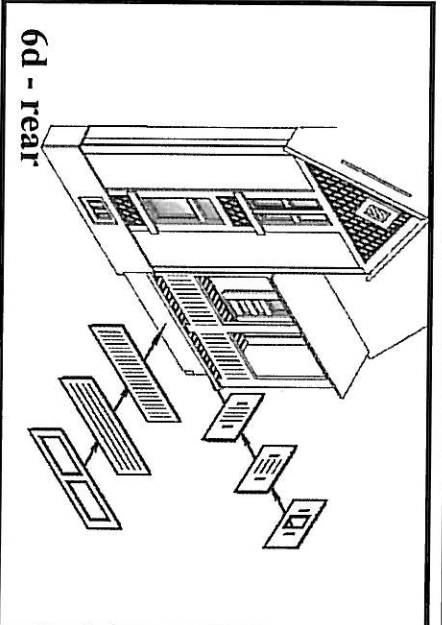
**6D)** Now apply the peel-and-stick lower trim panels to each porch. Each section is made up of three layers: the first two layers build up the lattice work and the outer layer is the outer trim. To help keep the layers lined up apply each directly to the porch, one layer at a time. Note that some of the panels have holes in them for the stairs, make sure these are lined up as you apply each layer.

**Stairs:**

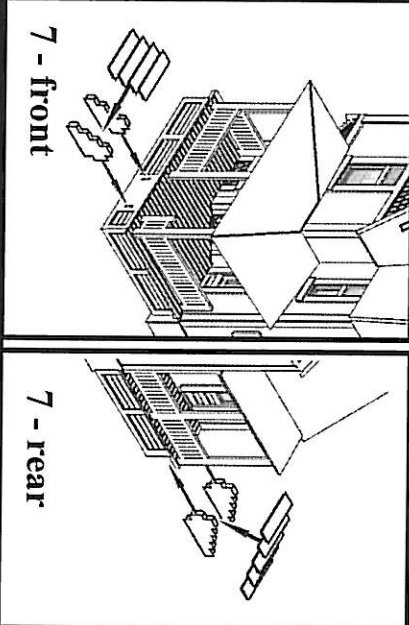
**7)** Identify the stair stringers for each porch - the front porch has four steps, the rear five. Glue the stringers into the slots in the porch trim panels, then apply the peel-and-stick steps to each of the stairs.



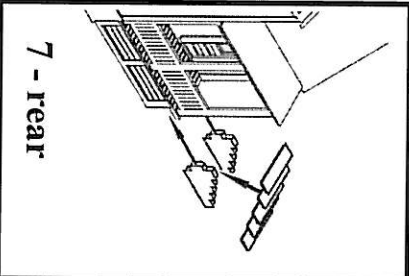
**6D - front**



**6d - rear**



**7 - front**



**7 - rear**