

Foundation:

7) Add the stone foundation sections by removing the peel-and-stick backing from each piece then pressing each into place at the bottoms of the appropriate wall (refer to the diagram for placement).

Once in place you can paint the stonework with a gray or brown paint. Spend a few minutes and pick out some of the individual stones with lighter and darker shades of your base color. Once this is dry follow with a wash of light gray or black to represent the mortar between the stones (light gray will make the foundation appear newer, black older). Finally dry brush some light gray or tan highlights into the stones.

Porches:

8A) Glue the porch flooring into the openings on the lower front of the house. Next glue in the three flooring supports to the flooring and into the slots in the front walls.

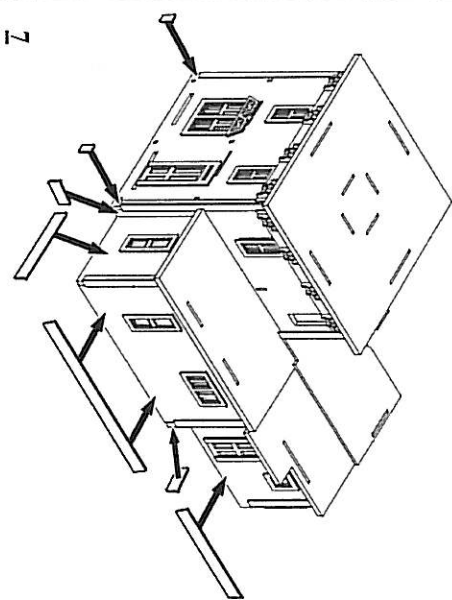
8B) Now install the lower porch lattice work by removing the backing from the three pieces and pressing them onto the porch legs as shown. The front piece should overlap the side two slightly.

Now install the upper cross beam to the porch - this tabs into the slots on the porch supports as shown. Next, apply the porch roof to the top of the supports, tabbing the edge into the slots in the front wall. Now add the side and front porch railings.

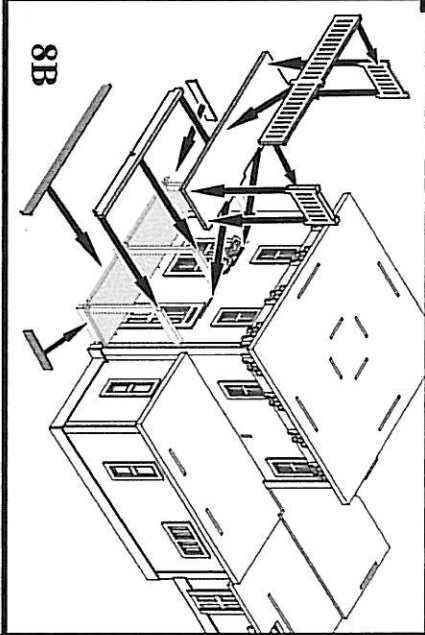
8C) The side porch assembles in the same manner as the front porch. See diagram for parts placement.

Upper roof supports:

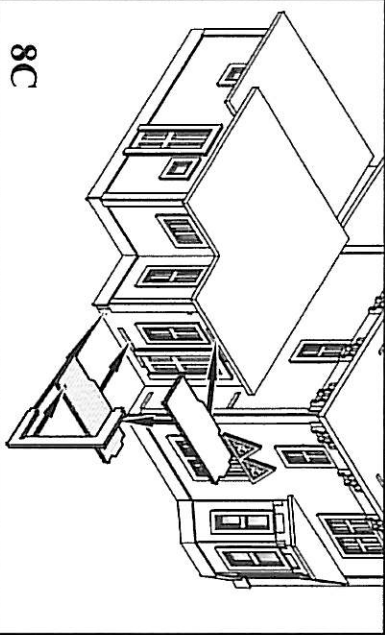
9) Assemble the upper roof support by first gluing the two triangular top-slotted into the openings in the sub roof, then glue in the bottom-slotted sections into the previous two as shown. Finally, glue the square top piece onto the pieces you just installed.



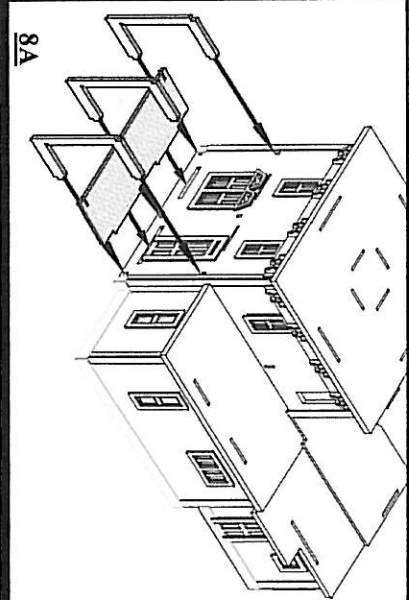
7



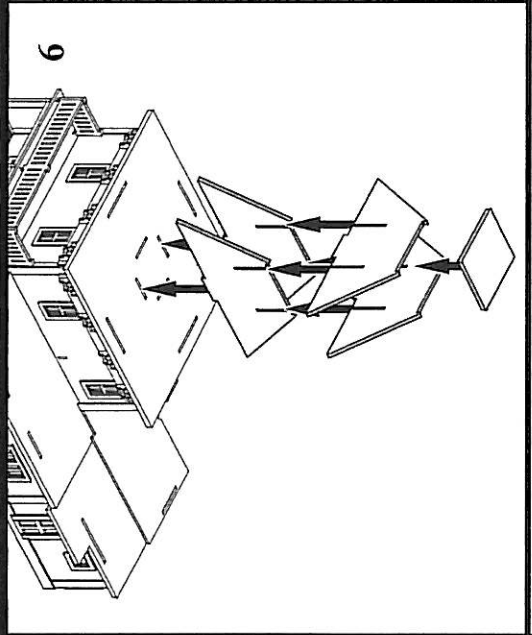
8B



8C



8A



9