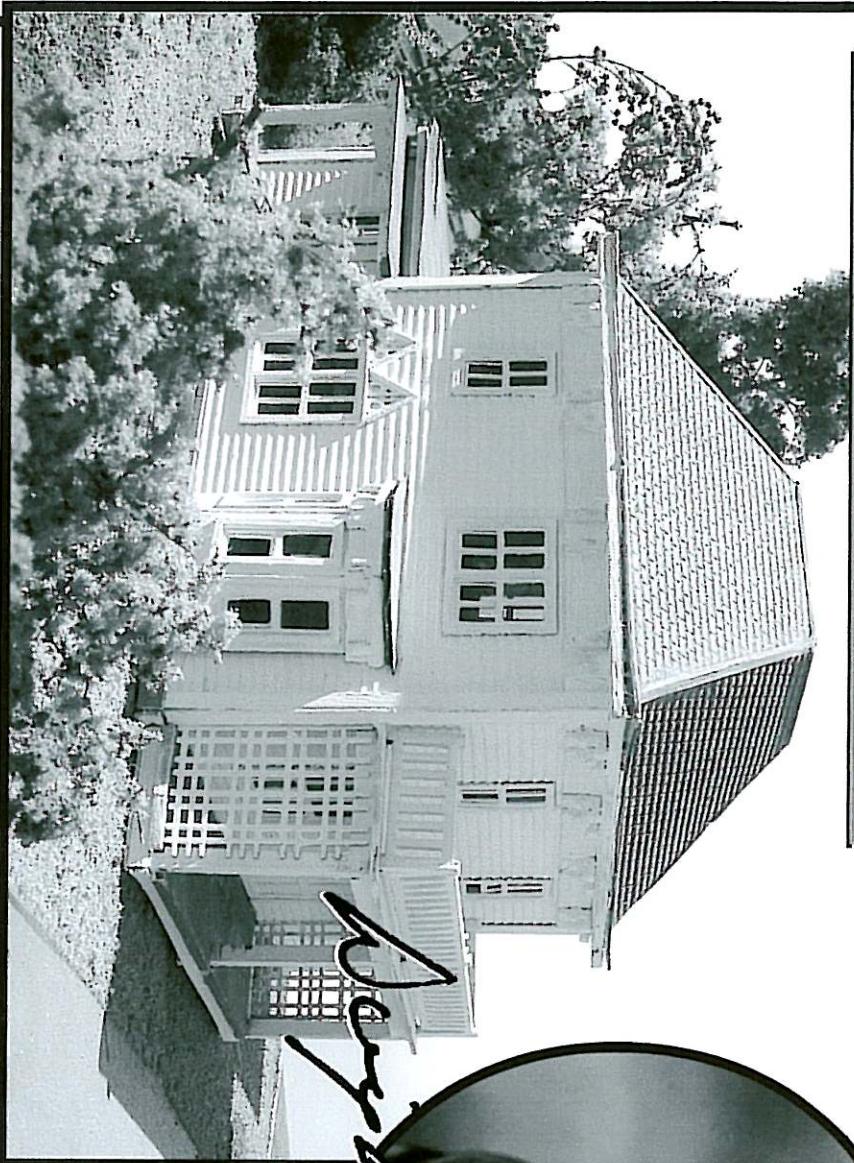


Eisenhower House

LASER-ART
STRUCTURES by BRANCHLINE TRAINS



Dwight D. Eisenhower



Components are held on the larger sheets with small tabs. Use a sharp knife or razor to remove the parts by cutting through the tabs. We recommend that you remove the parts as you use them. It's easier to keep track of them this way....

We use white glue (Elmer's or similar) for the wood-to-wood joints. Yellow carpenter's wood glue or ACC ("super glue") can also be used. It can be helpful to use bits of masking tape to hold corners together while the glue dries.

The peel and stick adhesive allows the part locations to be adjusted slightly when first applied, but will set up to a permanent bond in a few hours.

Painting tips:

We find it easier to paint many of the parts before or during assembly. If you choose to use water-based paints please be sure to paint both sides of the wood siding to minimize warping. Don't panic if the wood warps while the paint is still wet, in most cases it will straighten out after the paint dries.

The prototype Eisenhower home is painted white with white trim. The main roofing is covered in red-brown shingles.

Before you begin:

We recommend that you read through the instructions as well as the picture diagrams before you begin each step. This will help prevent any assembly mistakes. Dry fitting pieces before you glue will help as well.

History:

Built in 1887, this modest home in Abilene, Kansas was the home of the Eisenhower family from 1898 until the death of Ida Eisenhower (Ike's mother) in 1946. Ike grew up here, living in the house from the age of 8 until he enrolled in West Point in 1911. Today the house has been preserved as it was when Ida died in 1946 and forms the center of the Eisenhower Center and Library.

Kit basics:

Our kit consists of laser-cut wood components. Many of the parts are backed with a peel and stick coating to ease assembly. Assembly is not difficult, but being such an ornate house be prepared to spend a little time on the house.

You will need a few basic tools and supplies to build the kit. A sharp hobby knife and white glue are all that is required for most of the assembly. Some modelers might find a single-edged razor blade helpful.