

13b) Now place the completed assembly on top of the tower and secure with white glue.

13c) The tower roof supports are found on the sub-roof sheet. Glue these together as shown. Now remove the peel-and-stick backing from the tower sub roof and insert the tower roof support assembly into place as shown. Re-enforce the bond by adding a bead of white glue around the base of the part.

13d) Now remove the peel and stick backing from tower roof panels. Note that the front and rear sections are narrower than the side panels. Note also that the panels overhang the edge of the sub roof slightly and do not extend all the way to the top of the roof supports (they should end about 1/8" from the top).

Bay Window:

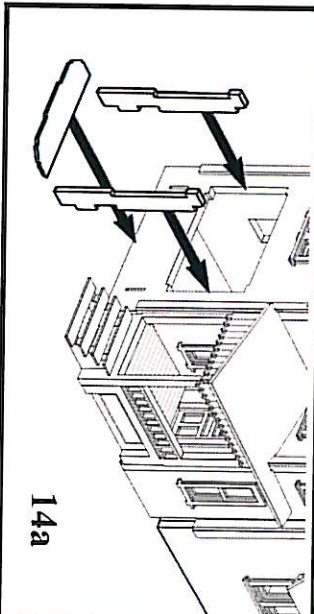
14a) The components for the bay window are on trim sheet 2. Start by gluing the two short side walls to the house wall with the peel-and-stick backing facing inwards. Now install the base with its peel-and-stick side up.

14b) Add the two diagonal side walls followed by the front wall using the peel and stick backing to hold these in place. Finally add the bay window roof panel, peel and stick side down.

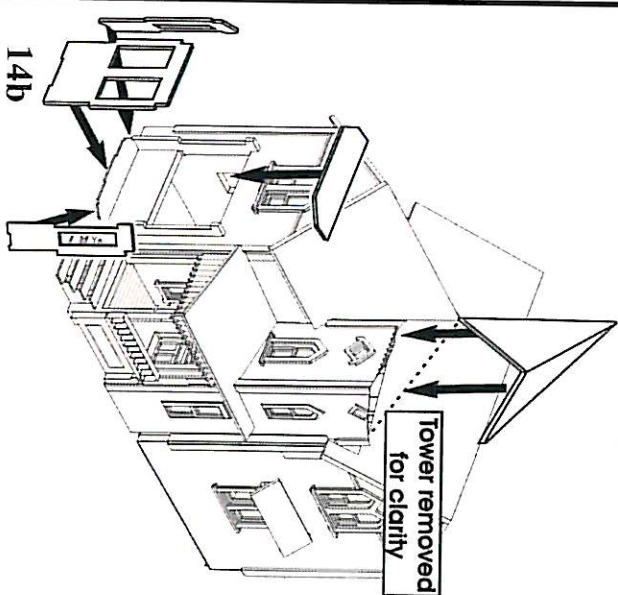
We'll also add the small roof section between the tower and main roof at this time. It is found on trim sheet 2. Remove the peel-and-stick backing and install as shown.

Stone Foundation:

15) Starting with section #1, remove the stone foundation sections from their backing sheet and press into place flush with the bottom edge of the building. To achieve a flush fit sections 13 and 18 should be installed last and need to be trimmed to length. Note that there are extra sections of stone trim. These would fit under the porches and are included for the folks who might want to modify the kit by leaving the porches off or making them open underneath.

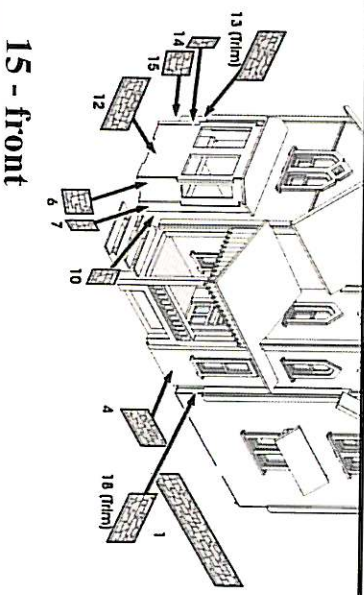


14a



Tower removed for clarity

14b



15 - front